

ACKR2 RABBIT PAB

Cat.#: S215490

Product Name: Anti-ACKR2 Rabbit Polyclonal Antibody

Synonyms: D6; hD6; CCR9; CCBP2; CCR10; CMKBR9

UNIPROT ID: O00590 (Gene Accession - NP_001287)

Background: This gene encodes a beta chemokine receptor, which is predicted to be a seven transmembrane protein similar to G protein-coupled receptors. Chemokines and their receptor-mediated signal transduction are critical for the recruitment of effector immune cells to the inflammation site. This gene is expressed in a range of tissues and hemopoietic cells. The expression of this receptor in lymphatic endothelial cells and overexpression in vascular tumors suggested its function in chemokine-driven recirculation of leukocytes and possible chemokine effects on the development and growth of vascular tumors. This receptor appears to bind the majority of beta-chemokine family members; however, its specific function remains unknown. This gene is mapped to chromosome 3p21.3, a region that includes a cluster of chemokine receptor genes.

Immunogen: Synthetic peptide of human ACKR2

Applications: ELISA, WB, IHC

Recommended Dilutions: IHC: 30-150;WB: 200-1000;ELISA: 5000-10000

Host Species: Rabbit

Clonality: Rabbit Polyclonal

Isotype: Immunogen-specific rabbit IgG

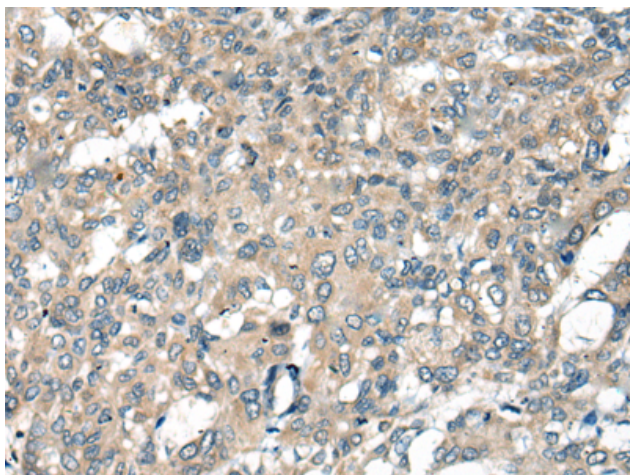
Purification: Antigen affinity purification

Species Reactivity: Human

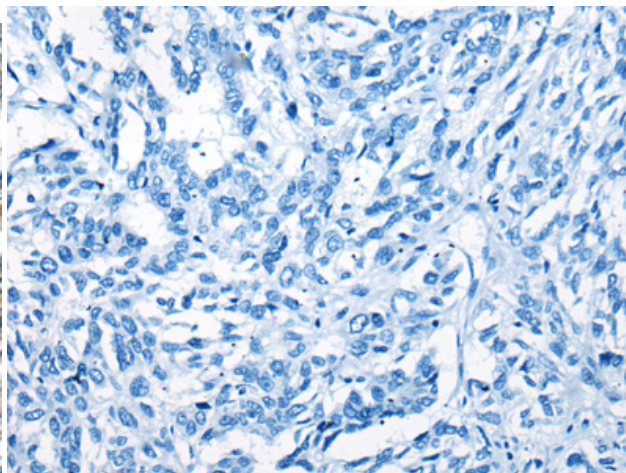
Constituents: PBS (without Mg²⁺ and Ca²⁺), pH 7.4, 150 mM NaCl, 0.05% Sodium Azide and 40% glycerol

Research Areas: Immunology

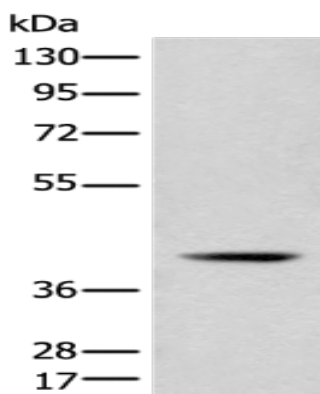
Storage & Shipping: Store at -20°C. Avoid repeated freezing and thawing



Immunohistochemistry analysis of paraffin embedded Human liver cancer tissue using 215490(ACKR2 Antibody) at a dilution of 1/45(Cytoplasm).



In comparison with the IHC on the left, the same paraffin-embedded Human liver cancer tissue is first treated with the synthetic peptide and then with 215490(Anti-ACKR2 Antibody) at dilution 1/45.



Gel: 8%SDS-PAGE, Lysate: 40 μ g;
Lane: Human placenta tissue lysate;
Primary antibody: 215490(ACKR2 Antibody) at dilution 1/400;
Secondary antibody: Goat anti rabbit IgG at 1/8000 dilution;
Exposure time: 3 seconds