

## ACOT2 RABBIT PAB

**Cat.#:** S210035

**Product Name:** Anti-ACOT2 Rabbit Polyclonal Antibody

**Synonyms:** MTE1; PTE2; CTE1A; PTE2A; CTE-1A; ZAP128

**UNIPROT ID:** P49753 (Gene Accession - BC004436 )

**Background:** This gene encodes a member of the acyl-CoA thioesterase protein family, and is one of four acyl-CoA hydrolase genes located in a cluster on chromosome 14. Alternative splicing results in multiple transcript variants. Acyl-CoA thioesterases, such as ACOT2, are a group of enzymes that hydrolyze Coenzyme A (CoA) esters, such as acyl-CoAs, bile CoAs, and CoA esters of prostaglandins, to the corresponding free acid and CoA. ACOT2 shows high acyl-CoA thioesterase activity on medium- and long-chain acyl-CoAs, with an optimal pH of 8.5. It is most active on myristoyl-CoA but also shows high activity on palmitoyl-CoA, stearoyl-CoA, and arachidoyl-CoA.

**Immunogen:** Fusion protein of human ACOT2

**Applications:** ELISA, WB, IHC

**Recommended Dilutions:** IHC: 15-50;WB: 200-1000;ELISA: 1000-2000

**Host Species:** Rabbit

**Clonality:** Rabbit Polyclonal

**Isotype:** Immunogen-specific rabbit IgG

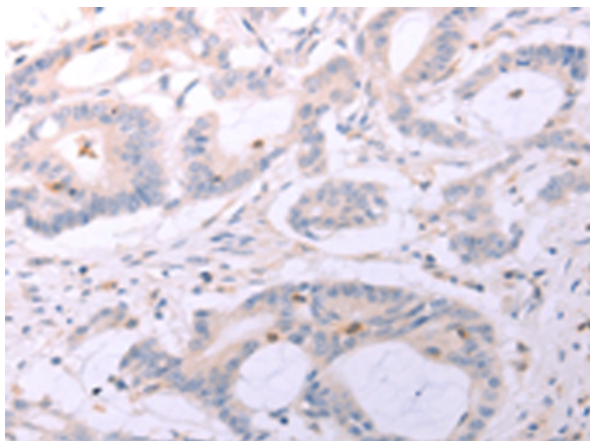
**Purification:** Antigen affinity purification

**Species Reactivity:** Human, Mouse

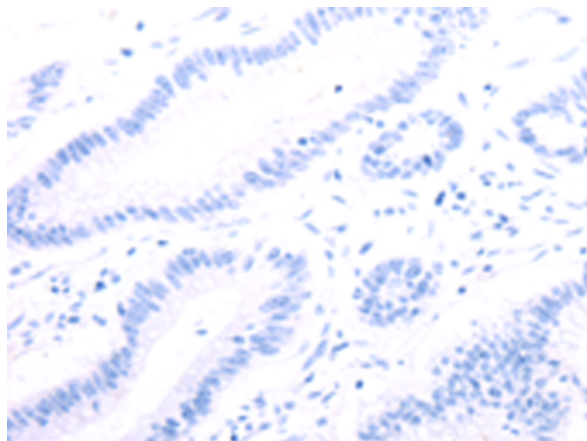
**Constituents:** PBS (without Mg<sup>2+</sup> and Ca<sup>2+</sup>), pH 7.4, 150 mM NaCl, 0.05% Sodium Azide and 40% glycerol

**Research Areas:** Metabolism, Cardiovascular

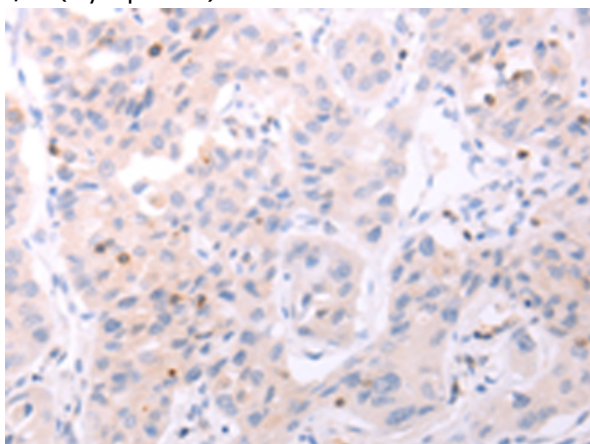
**Storage & Shipping:** Store at -20°C. Avoid repeated freezing and thawing



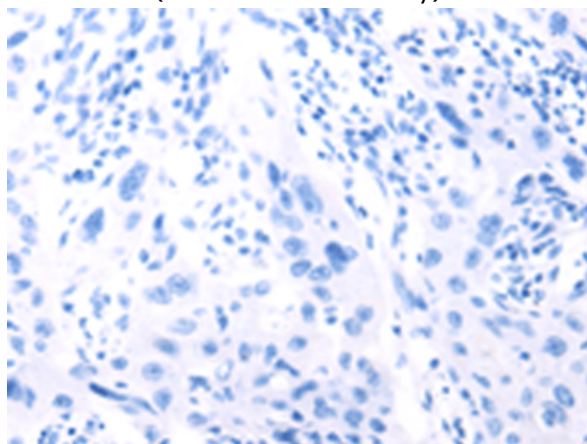
Immunohistochemistry analysis of paraffin embedded Human colon cancer tissue using 210035(ACOT2 Antibody) at a dilution of 1/25(Cytoplasm).



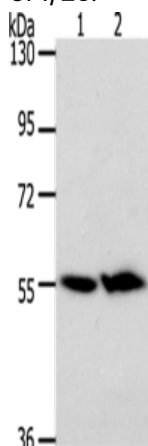
In comparison with the IHC on the left, the same paraffin-embedded Human colon cancer tissue is first treated with the fusion protein and then with 210035(Anti-ACOT2 Antibody) at dilution 1/25.



The image on the left is immunohistochemistry of paraffin-embedded Human lung cancer tissue using 210035(Anti-ACOT2 Antibody) at a dilution of 1/25.



In comparison with the IHC on the left, the same paraffin-embedded Human lung cancer tissue is first treated with fusion protein and then with D120042(Anti-ACOT2 Antibody) at dilution 1/25.



Gel: 8%SDS-PAGE, Lysate: 40 µg;  
Lane 1-2: Mouse kidney tissue, Mouse liver tissue;  
Primary antibody: 210035(ACOT2 Antibody) at dilution 1/200;  
Secondary antibody: Goat anti rabbit IgG at 1/8000 dilution;  
Exposure time: 5 minutes



# Product Description

Pioneering GTPase and Oncogene Product Development since 2010

---