

## ACOT8 RABBIT PAB

**Cat.#:** S216931

**Product Name:** Anti-ACOT8 Rabbit Polyclonal Antibody

**Synonyms:** hTE; PTE1; PTE2; PTE-1; PTE-2; HNAACTE; hACTE-III

**UNIPROT ID:** O14734 (Gene Accession - BC117155 )

**Background:** The protein encoded by this gene is a peroxisomal thioesterase that appears to be involved more in the oxidation of fatty acids rather than in their formation. The encoded protein can bind to the human immunodeficiency virus-1 protein Nef, and mediate Nef-induced down-regulation of CD4 in T-cells.

**Immunogen:** Full length fusion protein

**Applications:** ELISA, WB, IHC

**Recommended Dilutions:** IHC: 15-50;WB: 200-1000;ELISA: 2000-5000

**Host Species:** Rabbit

**Clonality:** Rabbit Polyclonal

**Isotype:** Immunogen-specific rabbit IgG

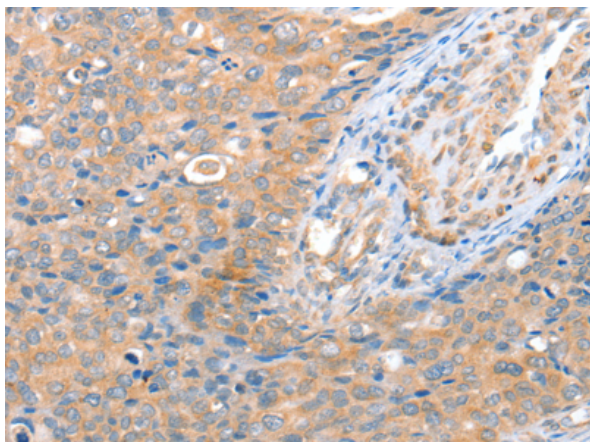
**Purification:** Antigen affinity purification

**Species Reactivity:** Human, Mouse, Rat

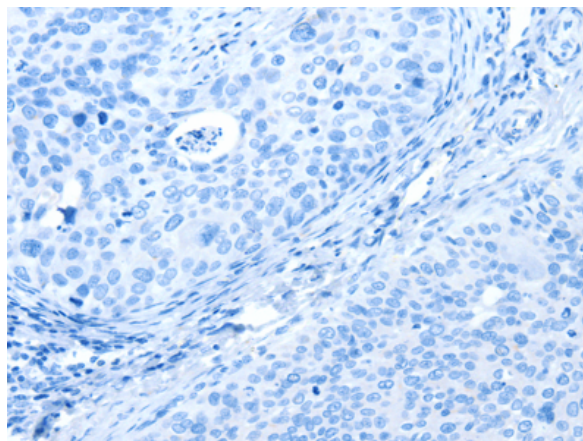
**Constituents:** PBS (without Mg<sup>2+</sup> and Ca<sup>2+</sup>), pH 7.4, 150 mM NaCl, 0.05% Sodium Azide and 40% glycerol

**Research Areas:** Metabolism

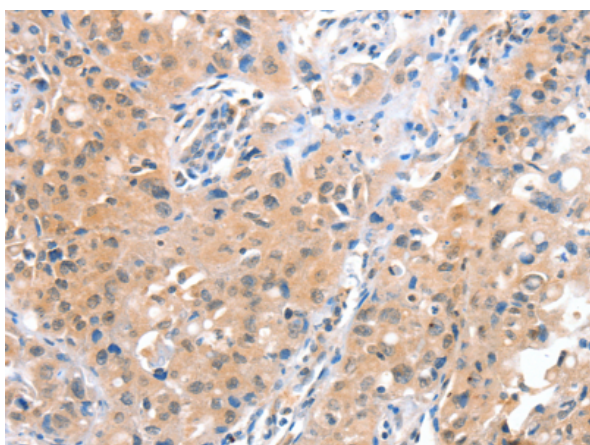
**Storage & Shipping:** Store at -20°C. Avoid repeated freezing and thawing



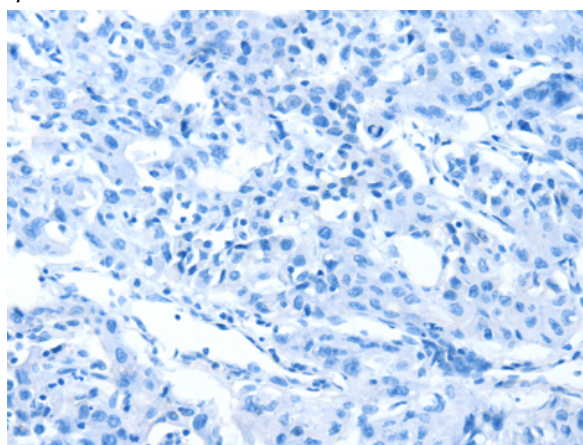
Immunohistochemistry analysis of paraffin embedded Human cervical cancer tissue using 216931(ACOT8 Antibody) at a dilution of 1/15(Cytoplasm).



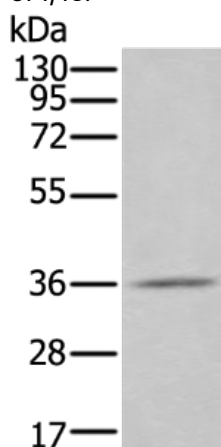
In comparison with the IHC on the left, the same paraffin-embedded Human cervical cancer tissue is first treated with the fusion protein and then with 216931(Anti-ACOT8 Antibody) at dilution 1/15.



The image on the left is immunohistochemistry of paraffin-embedded Human lung cancer tissue using 216931(Anti-ACOT8 Antibody) at a dilution of 1/15.



In comparison with the IHC on the left, the same paraffin-embedded Human lung cancer tissue is first treated with fusion protein and then with D221492(Anti-ACOT8 Antibody) at dilution 1/15.



Gel: 8%SDS-PAGE, Lysate: 40 µg;  
Lane: Human testis tissue lysate;  
Primary antibody: 216931(ACOT8 Antibody) at dilution 1/200;  
Secondary antibody: Goat anti rabbit IgG at 1/8000 dilution;  
Exposure time: 1 minute



# Product Description

Pioneering GTPase and Oncogene Product Development since 2010

---