

## ACTC1 RABBIT PAB

**Cat.#:** N225013

**Product Name:** Anti-ACTC1 Rabbit pAb

**Synonyms:** ACTC1; ACTC; Actin; alpha cardiac muscle 1; Alpha-cardiac actin; ACTA1; ACTA; Actin; alpha skeletal muscle; Alpha-actin-1; ACTA2; ACTSA; ACTVS; GIG46

**UNIPROT ID:** P68032

**Background:** Actins are highly conserved proteins that are involved in various types of cell motility and are ubiquitously expressed in all eukaryotic cells.

**Immunogen:** Synthesized peptide derived from the Internal region of human  $\alpha$ -SMA.

**Applications:** WB,IHC-P,ELISA

**Recommended Dilutions:** WB: 1/500-1/1000 IHC: 1/50-1/100 ELISA: 1/10000

**Host Species:** Rabbit

**Clonality:** Rabbit Polyclonal

**Clone ID:** -

**MW:** Calculated MW: 42 kDa; Observed MW: 42 kDa

**Isotype:** IgG

**Purification:** Affinity Purified

**Species Reactivity:** Human,Mouse,Rat

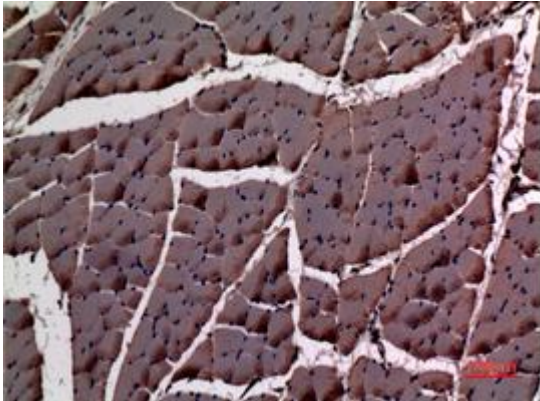
**Conjugation:** Unconjugated

**Modification:** Unmodified

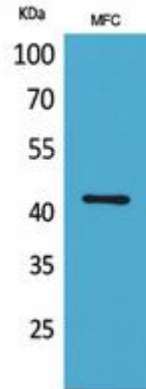
**Constituents:** PBS (without Mg<sup>2+</sup> and Ca<sup>2+</sup>), pH 7.3 containing 50% glycerol, 0.5% BSA and 0.02% sodium azide

**Research Areas:** Signal Transduction

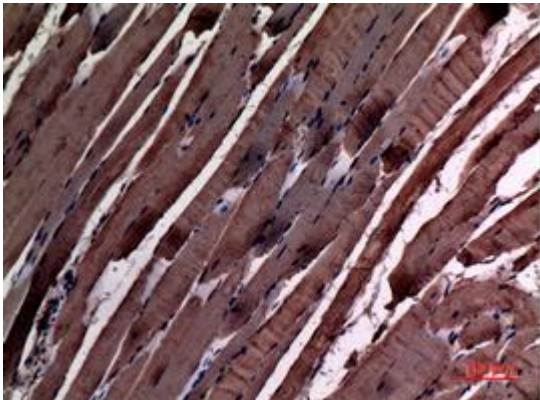
**Storage & Shipping:** Store at -20°C. Avoid repeated freezing and thawing



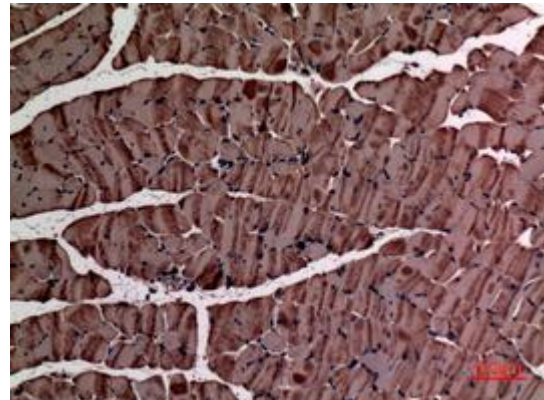
Immunohistochemistry analysis of paraffin-embedded rat muscle using ACTC1 antibody. High-pressure and temperature Sodium Citrate pH 6.0 was used for antigen retrieval.



Western blot analysis of ACTC1 in Sodium MFC lysates using ACTC1 antibody.



Immunohistochemistry analysis of paraffin-embedded rat muscle using ACTC1 antibody. High-pressure and temperature Sodium Citrate pH 6.0 was used for antigen retrieval.



Immunohistochemistry analysis of paraffin-embedded mouse muscle using ACTC1 antibody. High-pressure and temperature Sodium Citrate pH 6.0 was used for antigen retrieval.