

ACTIN RABBIT PAB

Cat. #: 22080

Product Name: Anti-Actin Rabbit pAb

Synonyms: ACTB; Actin; cytoplasmic 1; Beta-actin; POTEKP; ACTBL3; FKSG30; Putative beta-actin-like protein 3; Kappa-actin; POTE ankyrin domain family member K; ACTG1; ACTB; ACTG; Actin; cytoplasmic 2; Gamma-actin

UNIPROT ID: P60709/P63261

Background: beta-Actin is one of six different actin isoforms that have been identified. The actin molecules found in cells of various species and tissues tend to be very similar in their immunological and physical properties. Therefore, Antibodies against beta-Actin are useful as loading controls for Western Blotting. However it should be noted that levels of beta-Actin may not be stable in certain cells. For example, expression of beta-Actin in adipose tissue is very low and therefore it should not be used as loading control for these tissues.

Immunogen: The antiserum was produced against synthesized peptide derived from human Actin. AA range:326-375

Applications: WB,IHC-P,ELISA

Recommended Dilutions: WB: 1/500-1/1000 IHC: 1/50-1/100 ELISA: 1/10000

Host Species: Rabbit

Clonality: Rabbit Polyclonal

Clone ID: -

MW: Calculated MW: 42 kDa; Observed MW: 45 kDa

Isotype: IgG

Purification: Affinity Purified

Species Reactivity: Human,Mouse,Rat

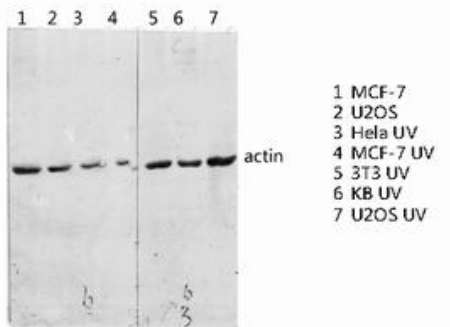
Conjugation: Unconjugated

Modification: Unmodified

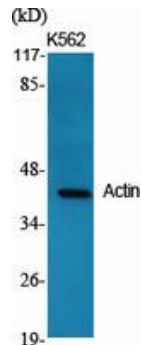
Constituents: PBS (without Mg²⁺ and Ca²⁺), pH 7.3 containing 50% glycerol, 0.5% BSA and 0.02% sodium azide

Research Areas: Cell Biology

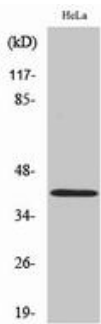
Storage & Shipping: Store at -20°C. Avoid repeated freezing and thawing



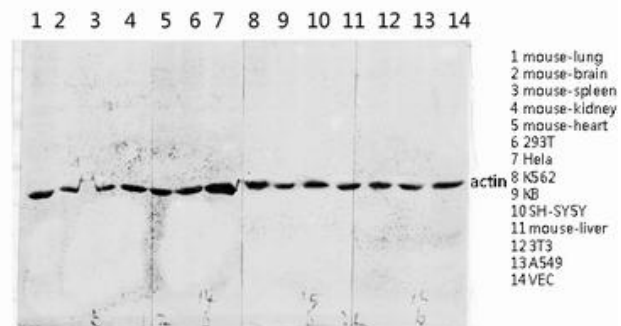
Western blot analysis of Actin in various lysates using Actin antibody.



Western blot analysis of Actin in various lysates using Actin antibody.



Western blot analysis of Actin in HeLa lysates using Actin antibody.



Western blot analysis of Actin in various lysates using Actin antibody.