

## ACTIN RELATED PROTEIN 3 RABBIT MAB

**Cat.#:** N261871

**Product Name:** Anti-Actin Related Protein 3 Rabbit Monoclonal Antibody

**Synonyms:** ACTR3; ARP3; Actin-related protein 3; Actin-like protein 3

**UNIPROT ID:** P61158

**Background:** The Arp2/3 complex involved in Golgi polarization in NIH3T3 cells. In a different model it has been shown that the Arp2/3 complex is necessary for neutrophil chemotaxis and phagocytosis.

**Immunogen:** A synthetic peptide of human Arp3

**Applications:** WB,IHC-F,IHC-P,ICC/IF

**Recommended Dilutions:** WB: 1/500-1/1000 IHC: 1/50-1/100 IF: 1/50-1/200

**Host Species:** Rabbit

**Clonality:** Rabbit Monoclonal

**Clone ID:** R08-2A2

**MW:** Calculated MW: 47 kDa; Observed MW: 47 kDa

**Isotype:** IgG

**Purification:** Affinity Purified

**Species Reactivity:** Human,Mouse,Rat

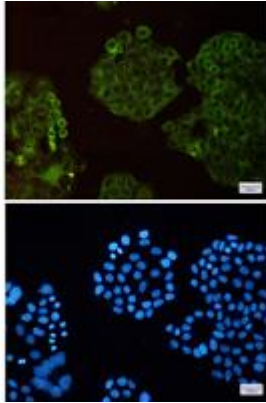
**Conjugation:** Unconjugated

**Modification:** Unmodified

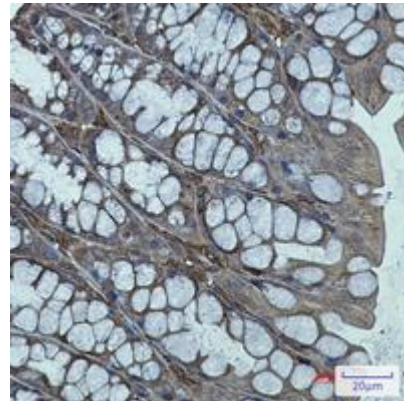
**Constituents:** PBS (without Mg<sup>2+</sup> and Ca<sup>2+</sup>), pH 7.3 containing 50% glycerol, 0.5% BSA and 0.02% sodium azide

**Research Areas:** Immunology

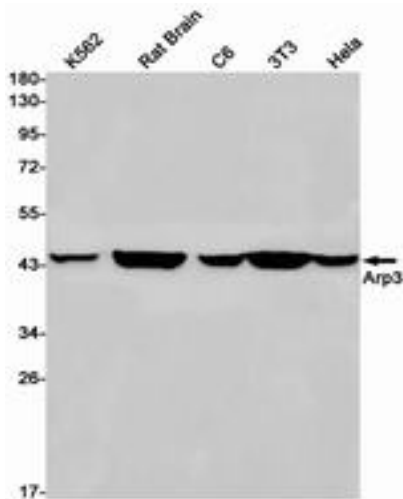
**Storage & Shipping:** Store at -20°C. Avoid repeated freezing and thawing



Immunocytochemistry analysis of Arp3 (green) in HeLa cells using Arp3 antibody, and DAPI (blue)



Immunohistochemistry analysis of paraffin-embedded mouse colon using Actin Related Protein 3 antibody. High-pressure and temperature Sodium Citrate pH 6.0 was used for antigen retrieval.



Western blot analysis of Arp3 in K562, rat Brain, C6, 3T3, HeLa lysates using Arp3 antibody.