

ACTR3B RABBIT PAB

Cat.#: S216928

Product Name: Anti-ACTR3B Rabbit Polyclonal Antibody

Synonyms: ARP11; ARP3BETA

UNIPROT ID: Q9PIU1 (Gene Accession - BC015207)

Background: This gene encodes a member of the actin-related proteins (ARP), which form multiprotein complexes and share 35-55% amino acid identity with conventional actin. The protein encoded by this gene may have a regulatory role in the actin cytoskeleton and induce cell-shape change and motility. Pseudogenes of this gene are located on chromosomes 2, 4, 10, 16, 22 and Y. Alternative splicing results in multiple transcript variants and protein isoforms.

Immunogen: Fusion protein of human ACTR3B

Applications: ELISA, WB, IHC

Recommended Dilutions: IHC: 15-50;WB: 500-2000;ELISA: 2000-5000

Host Species: Rabbit

Clonality: Rabbit Polyclonal

Isotype: Immunogen-specific rabbit IgG

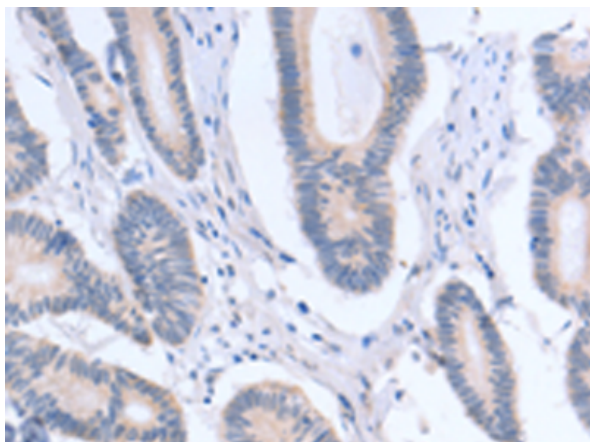
Purification: Antigen affinity purification

Species Reactivity: Human, Mouse

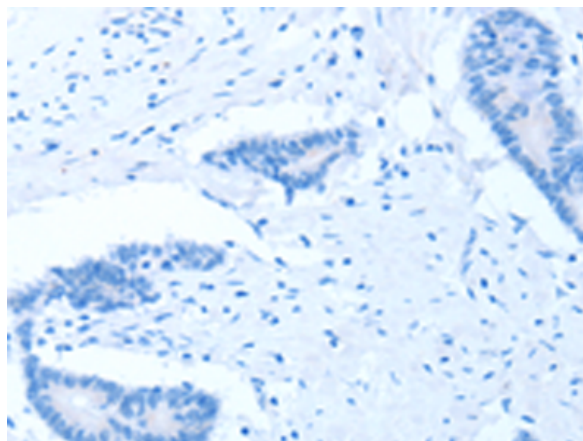
Constituents: PBS (without Mg²⁺ and Ca²⁺), pH 7.4, 150 mM NaCl, 0.05% Sodium Azide and 40% glycerol

Research Areas: Signal Transduction

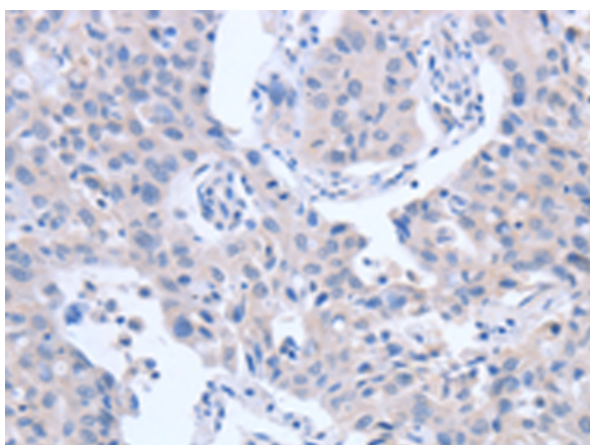
Storage & Shipping: Store at -20°C. Avoid repeated freezing and thawing



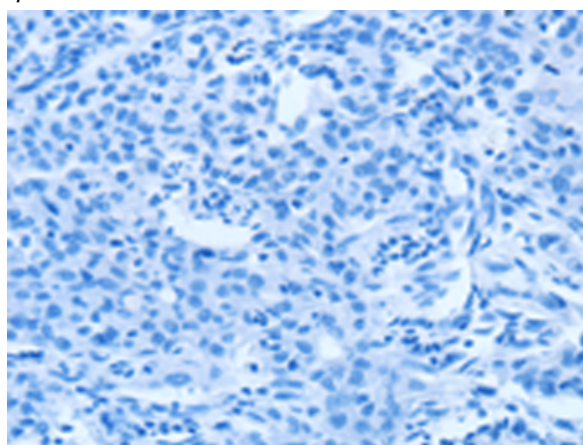
Immunohistochemistry analysis of paraffin embedded Human colon cancer tissue using 216928(ACTR3B Antibody) at a dilution of 1/15(Cytoplasm).



In comparison with the IHC on the left, the same paraffin-embedded Human colon cancer tissue is first treated with the fusion protein and then with 216928(Anti-ACTR3B Antibody) at dilution 1/15.



The image on the left is immunohistochemistry of paraffin-embedded Human lung cancer tissue using 216928(Anti-ACTR3B Antibody) at a dilution of 1/15.



In comparison with the IHC on the left, the same paraffin-embedded Human lung cancer tissue is first treated with fusion protein and then with D221488(Anti-ACTR3B Antibody) at dilution 1/15.



Gel: 10%SDS-PAGE, Lysate: 40 µg;
Lane 1-2: Mouse brain tissue, Jurkat cells;
Primary antibody: 216928(ACTR3B Antibody) at dilution 1/350;
Secondary antibody: Goat anti rabbit IgG at 1/8000 dilution;
Exposure time: 10 seconds



Product Description

Pioneering GTPase and Oncogene Product Development since 2010
