

## ACY1 RABBIT PAB

**Cat.#:** S216998

**Product Name:** Anti-ACY1 Rabbit Polyclonal Antibody

**Synonyms:** ACY-1; ACY1D

**UNIPROT ID:** Q03154 (Gene Accession - BC000545 )

**Background:** This gene encodes a cytosolic, homodimeric, zinc-binding enzyme that catalyzes the hydrolysis of acylated L-amino acids to L-amino acids and an acyl group, and has been postulated to function in the catabolism and salvage of acylated amino acids. This gene is located on chromosome 3p21.1, a region reduced to homozygosity in small-cell lung cancer (SCLC), and its expression has been reported to be reduced or undetectable in SCLC cell lines and tumors. The amino acid sequence of human aminoacylase-1 is highly homologous to the porcine counterpart, and this enzyme is the first member of a new family of zinc-binding enzymes. Mutations in this gene cause aminoacylase-1 deficiency, a metabolic disorder characterized by central nervous system defects and increased urinary excretion of N-acetylated amino acids. Alternative splicing of this gene results in multiple transcript variants. Read-through transcription also exists between this gene and the upstream ABHD14A (abhydrolase domain containing 14A) gene, as represented in GeneID:100526760. A related pseudogene has been identified on chromosome 18.

**Immunogen:** Fusion protein of human ACY1

**Applications:** ELISA, WB, IHC

**Recommended Dilutions:** IHC: 25-100;WB: 200-1000;ELISA: 2000-5000

**Host Species:** Rabbit

**Clonality:** Rabbit Polyclonal

**Isotype:** Immunogen-specific rabbit IgG

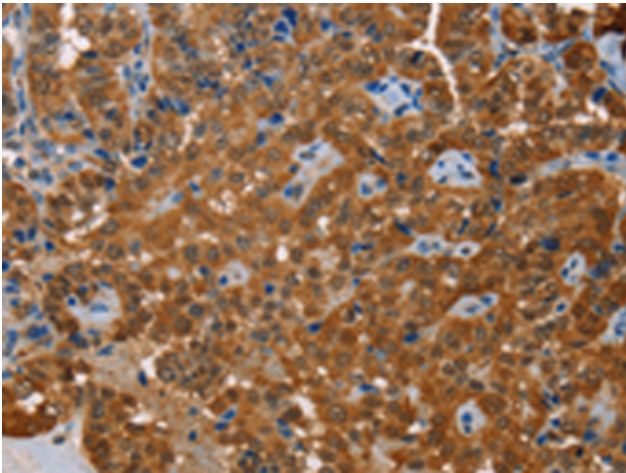
**Purification:** Antigen affinity purification

**Species Reactivity:** Human, Mouse

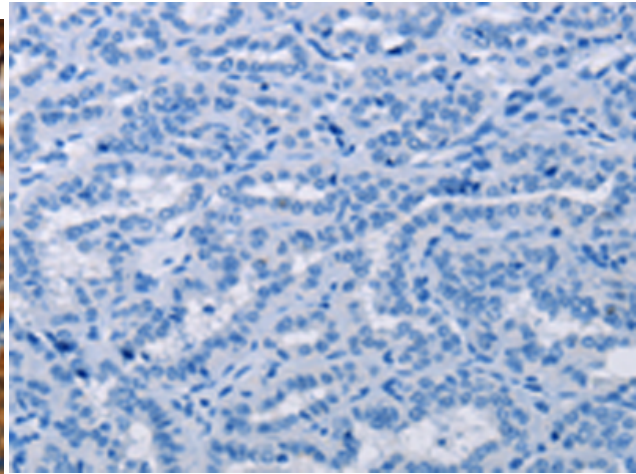
**Constituents:** PBS (without Mg<sup>2+</sup> and Ca<sup>2+</sup>), pH 7.4, 150 mM NaCl, 0.05% Sodium Azide and 40% glycerol

**Research Areas:** Metabolism

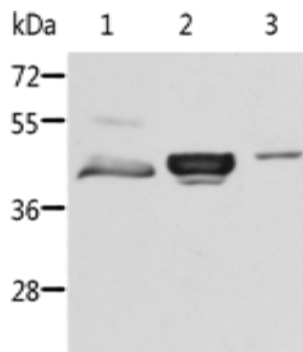
**Storage & Shipping:** Store at -20°C. Avoid repeated freezing and thawing



Immunohistochemistry analysis of paraffin embedded Human thyroid cancer tissue using 216998 (ACY1 Antibody) at a dilution of 1/20 (Cytoplasm and Nucleus).



In comparison with the IHC on the left, the same paraffin-embedded Human thyroid cancer tissue is first treated with the fusion protein and then with 216998 (Anti-ACY1 Antibody) at dilution 1/20.



Gel: 10% SDS-PAGE, Lysate: 40  $\mu$ g;  
Lane 1-3: Mouse kidney tissue, human normal kidney tissue, K562 cells;  
Primary antibody: 216998 (ACY1 Antibody) at dilution 1/200;  
Secondary antibody: Goat anti rabbit IgG at 1/8000 dilution;  
Exposure time: 1 minute