

## ACYP1 RABBIT PAB

**Cat.#:** S216932

**Product Name:** Anti-ACYP1 Rabbit Polyclonal Antibody

**Synonyms:** ACYPE

**UNIPROT ID:** P07311 (Gene Accession - BC035568 )

**Background:** This gene is a member of the acylphosphatase family. The encoded protein is a small cytosolic enzyme that catalyzes the hydrolysis of the carboxyl-phosphate bond of acylphosphates. Two isoenzymes have been isolated and described based on their tissue localization: erythrocyte (common) type acylphosphatase encoded by this gene, and muscle type acylphosphatase. Alternative splicing results in multiple transcript variants.

**Immunogen:** Fusion protein of human ACYP1

**Applications:** ELISA, WB, IHC

**Recommended Dilutions:** IHC: 50-300;WB: 500-2000;ELISA: 5000-10000

**Host Species:** Rabbit

**Clonality:** Rabbit Polyclonal

**Isotype:** Immunogen-specific rabbit IgG

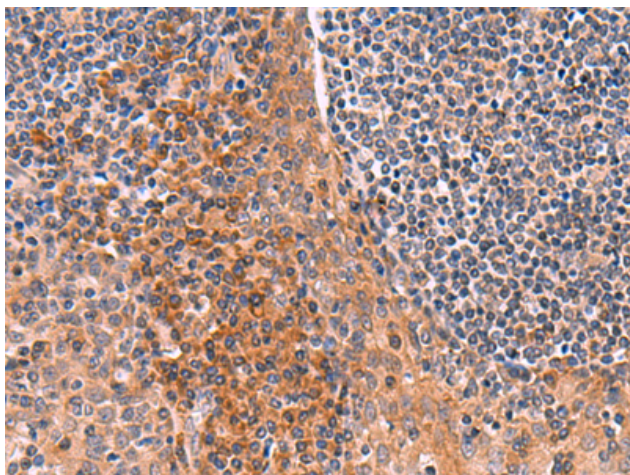
**Purification:** Antigen affinity purification

**Species Reactivity:** Human, Mouse

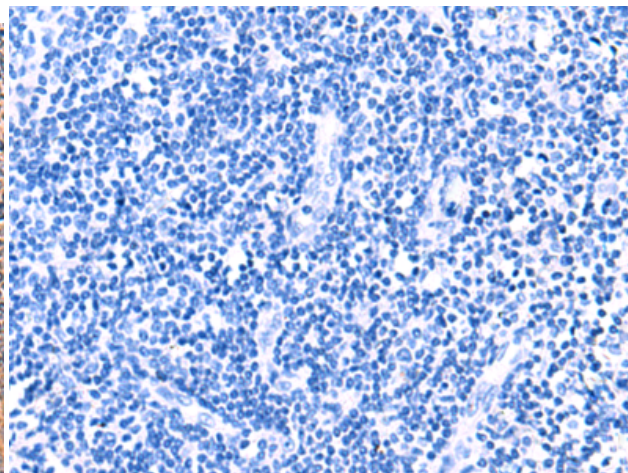
**Constituents:** PBS (without Mg<sup>2+</sup> and Ca<sup>2+</sup>), pH 7.4, 150 mM NaCl, 0.05% Sodium Azide and 40% glycerol

**Research Areas:** Metabolism

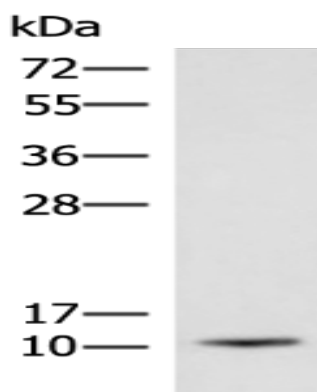
**Storage & Shipping:** Store at -20°C. Avoid repeated freezing and thawing



Immunohistochemistry analysis of paraffin embedded Human tonsil tissue using 216932(ACYPI Antibody) at a dilution of 1/65(Cytoplasm).



In comparison with the IHC on the left, the same paraffin-embedded Human tonsil tissue is first treated with the fusion protein and then with 216932(Anti-ACYPI Antibody) at dilution 1/65.



Gel: 12%SDS-PAGE, Lysate: 40  $\mu$ g;  
Lane: Human fetal brain tissue lysate;  
Primary antibody: 216932(ACYPI Antibody) at dilution 1/700;  
Secondary antibody: HRP-conjugated Goat anti rabbit IgG at 1/5000 dilution;  
Exposure time: 10 seconds