

ADAM10 RABBIT PAB

Cat.#: N226015

Product Name: Anti-ADAM10 Rabbit pAb

Synonyms: CDw156; CD156c; ADAM10; KUZ; MADM

UNIPROT ID: O14672

Background: The ADAM10 prodomain acts as a chaperone that stabilizes mature ADAM protein folding, and prevents target-protein shedding through inhibition of ADAM10 proteinase activity. Mature ADAM10 is the major α -secretase responsible for cleavage of Notch, APP, cadherins, and prion protein. The ADAM10 protein cleaves receptor tyrosine kinases and their associated ligands and displays a wide range of regulatory functions across related signaling pathways.

Immunogen: A synthetic peptide of human ADAM10

Applications: WB,IP

Recommended Dilutions: WB: 1/500-1/1000 IP: 1/20

Host Species: Rabbit

Clonality: Rabbit Polyclonal

Clone ID: -

MW: Calculated MW: 84 kDa; Observed MW: 90,68 kDa

Isotype: IgG

Purification: Affinity Purified

Species Reactivity: Human

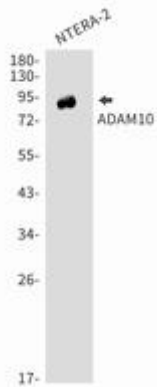
Conjugation: Unconjugated

Modification: Unmodified

Constituents: PBS (without Mg²⁺ and Ca²⁺), pH 7.3 containing 50% glycerol, 0.5% BSA and 0.02% sodium azide

Research Areas: Cell Biology

Storage & Shipping: Store at -20°C. Avoid repeated freezing and thawing



Western blot analysis of ADAM10 in NTERA-2 lysates using ADAM10 antibody.