

ADAM11 RABBIT PAB

Cat.#: S220264

Product Name: Anti-ADAM11 Rabbit Polyclonal Antibody

Synonyms: MDC

UNIPROT ID: O75078 (Gene Accession - NP_002381)

Background: This gene encodes a member of the ADAM (a disintegrin and metalloprotease) protein family. Members of this family are membrane-anchored proteins structurally related to snake venom disintegrins, and have been implicated in a variety of biological processes involving cell-cell and cell-matrix interactions, including fertilization, muscle development, and neurogenesis. This gene represents a candidate tumor suppressor gene for human breast cancer based on its location within a minimal region of chromosome 17q21 previously defined by tumor deletion mapping.

Immunogen: Synthetic peptide of human ADAM11

Applications: ELISA, WB, IHC

Recommended Dilutions: IHC: 25-100;WB: 200-1000;ELISA: 1000-2000

Host Species: Rabbit

Clonality: Rabbit Polyclonal

Isotype: Immunogen-specific rabbit IgG

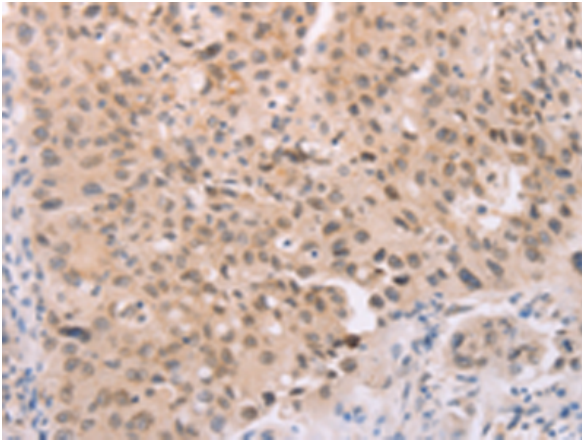
Purification: Antigen affinity purification

Species Reactivity: Human, Mouse

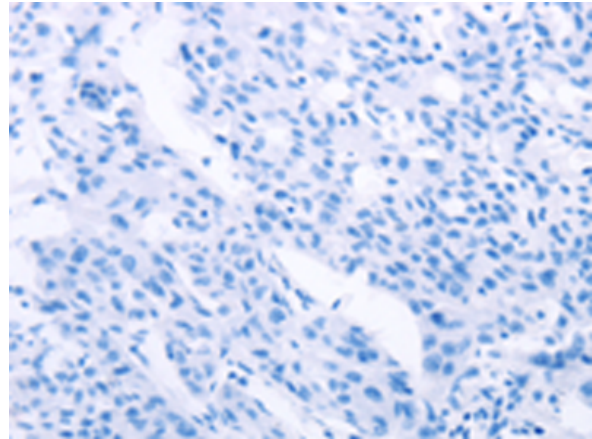
Constituents: PBS (without Mg²⁺ and Ca²⁺), pH 7.4, 150 mM NaCl, 0.05% Sodium Azide and 40% glycerol

Research Areas: Signal Transduction, Cell Biology

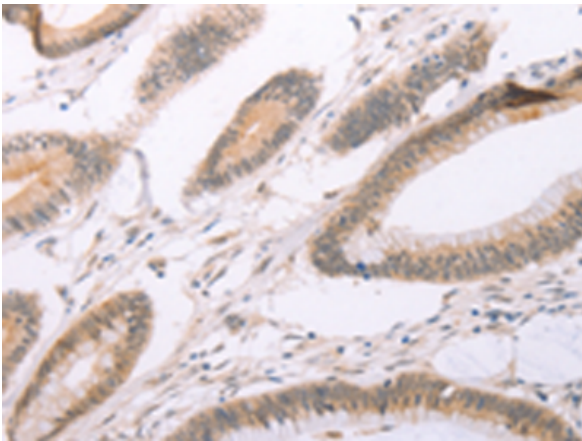
Storage & Shipping: Store at -20°C. Avoid repeated freezing and thawing



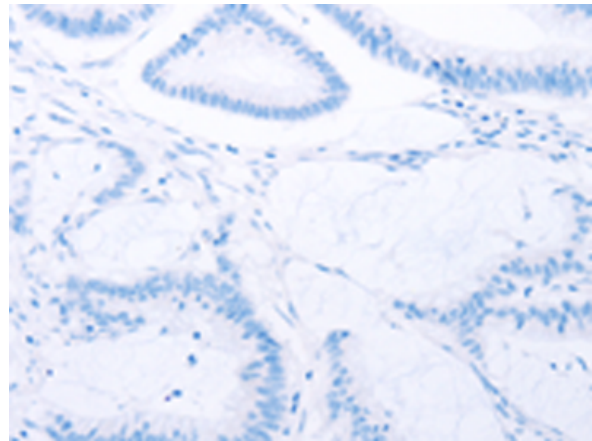
Immunohistochemistry analysis of paraffin embedded Human lung cancer tissue using 220264(ADAM11 Antibody) at a dilution of 1/25(Cytoplasm, Nucleus).



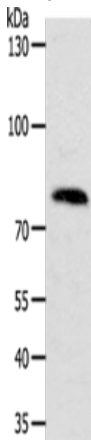
In comparison with the IHC on the left, the same paraffin-embedded Human lung cancer tissue is first treated with the synthetic peptide and then with 220264(Anti-ADAM11 Antibody) at dilution 1/25.



The image on the left is immunohistochemistry of paraffin-embedded Human colon cancer tissue using 220264(Anti-ADAM11 Antibody) at a dilution of 1/25.



In comparison with the IHC on the left, the same paraffin-embedded Human colon cancer tissue is first treated with synthetic peptide and then with D261230(Anti-ADAM11 Antibody) at dilution 1/25.



Gel: 10%SDS-PAGE, Lysate: 50 µg;
Lane: HeLa cells;
Primary antibody: 220264(ADAM11 Antibody) at dilution 1/200;
Secondary antibody: Goat anti rabbit IgG at 1/8000 dilution;
Exposure time: 10 minutes



Product Description

Pioneering GTPase and Oncogene Product Development since 2010
