

## ADAM20 RABBIT PAB

**Cat.#:** S216935

**Product Name:** Anti-ADAM20 Rabbit Polyclonal Antibody

**Synonyms:**

**UNIPROT ID:** O43506 (Gene Accession - BC025378 )

**Background:** This gene encodes a member of the ADAM (a disintegrin and metalloprotease domain) family. Members of this family are membrane-anchored proteins structurally related to snake venom disintegrins, and have been implicated in a variety of biological processes involving cell-cell and cell-matrix interactions, including fertilization, muscle development, and neurogenesis. The expression of this gene is testis-specific.

**Immunogen:** Fusion protein of human ADAM20

**Applications:** ELISA, WB, IHC

**Recommended Dilutions:** IHC: 25-100;WB: 100-500;ELISA: 500-1000

**Host Species:** Rabbit

**Clonality:** Rabbit Polyclonal

**Isotype:** Immunogen-specific rabbit IgG

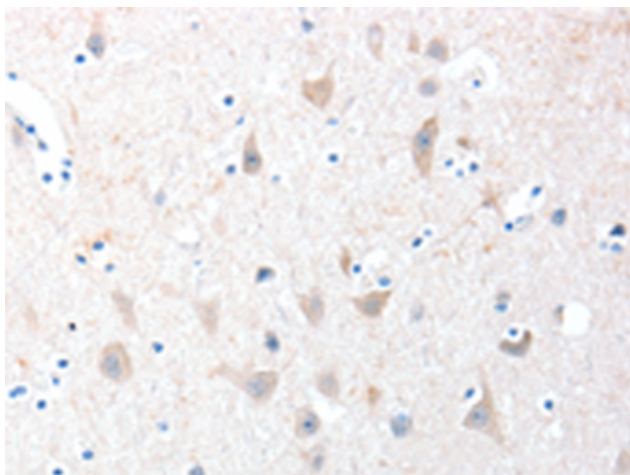
**Purification:** Antigen affinity purification

**Species Reactivity:** Human

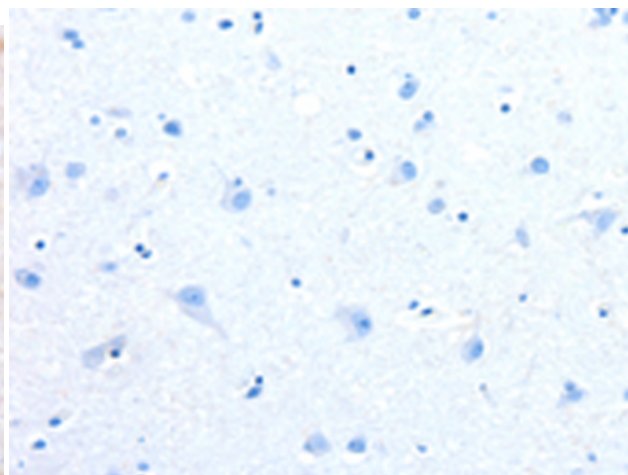
**Constituents:** PBS (without Mg<sup>2+</sup> and Ca<sup>2+</sup>), pH 7.4, 150 mM NaCl, 0.05% Sodium Azide and 40% glycerol

**Research Areas:** Signal Transduction, Cell Biology

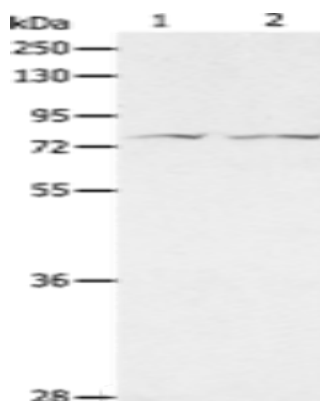
**Storage & Shipping:** Store at -20°C. Avoid repeated freezing and thawing



Immunohistochemistry analysis of paraffin embedded Human brain tissue using 216935 (ADAM20 Antibody) at a dilution of 1/30 (Cytoplasm).



In comparison with the IHC on the left, the same paraffin-embedded Human brain tissue is first treated with the fusion protein and then with 216935 (Anti-ADAM20 Antibody) at dilution 1/30.



Gel: 8% SDS-PAGE, Lysate: 40 µg;  
Lane 1-2: PC3 cells, HeLa cells;  
Primary antibody: 216935 (ADAM20 Antibody) at dilution 1/100;  
Secondary antibody: Goat anti rabbit IgG at 1/8000 dilution;  
Exposure time: 10 seconds