

## ADAM32 RABBIT PAB

**Cat.#:** S216936

**Product Name:** Anti-ADAM32 Rabbit Polyclonal Antibody

**Synonyms:**

**UNIPROT ID:** Q8TC27 (Gene Accession - BC026169 )

**Background:** A number of a disintegrin and metalloprotease (ADAM) family members are expressed in mammalian male reproductive organs such as testis and epididymis. The cDNA sequence of ADAM32 has an open reading frame which encodes 750 (mouse ADAM32) and 787 (human ADAM32) amino acids, sharing 69% homology between the two species. Comparison of amino acid sequences showed that ADAM32 is highly homologous to ADAM2 and ADAM3, sperm surface proteins required for fertilization. We found that the ADAM32 gene is expressed predominantly in the testis.

**Immunogen:** Fusion protein of human ADAM32

**Applications:** ELISA, WB, IHC

**Recommended Dilutions:** IHC: 15-50;WB: 200-1000;ELISA: 1000-2000

**Host Species:** Rabbit

**Clonality:** Rabbit Polyclonal

**Isotype:** Immunogen-specific rabbit IgG

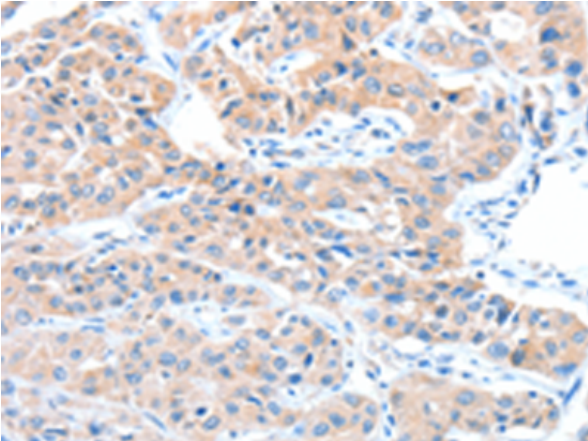
**Purification:** Antigen affinity purification

**Species Reactivity:** Human

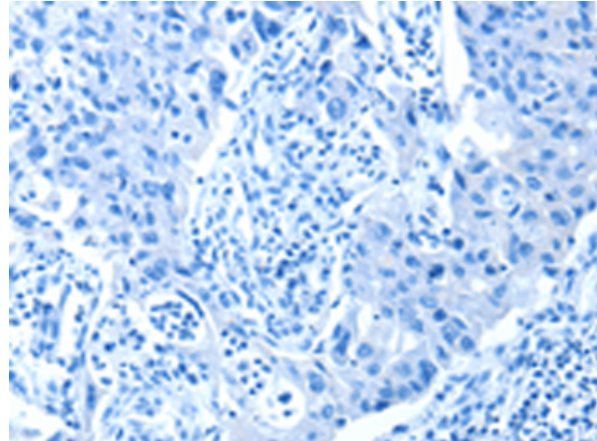
**Constituents:** PBS (without Mg<sup>2+</sup> and Ca<sup>2+</sup>), pH 7.4, 150 mM NaCl, 0.05% Sodium Azide and 40% glycerol

**Research Areas:** Signal Transduction

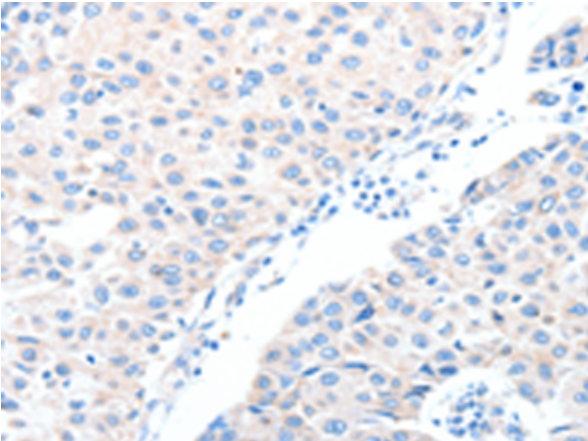
**Storage & Shipping:** Store at -20°C. Avoid repeated freezing and thawing



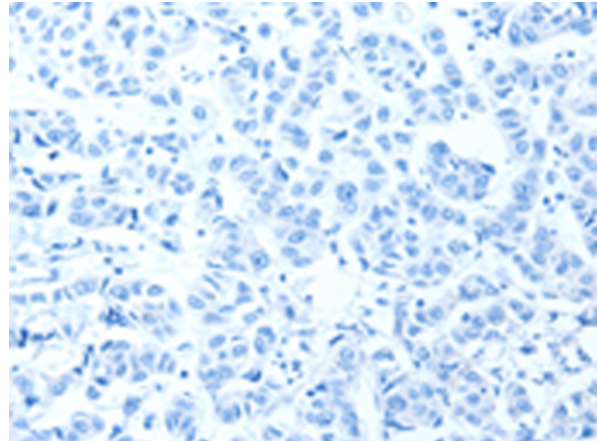
Immunohistochemistry analysis of paraffin embedded Human lung cancer tissue using 216936(ADAM32 Antibody) at a dilution of 1/15(Cytoplasm).



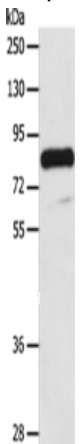
In comparison with the IHC on the left, the same paraffin-embedded Human lung cancer tissue is first treated with the fusion protein and then with 216936(Anti-ADAM32 Antibody) at dilution 1/15.



The image on the left is immunohistochemistry of paraffin-embedded Human breast cancer tissue using 216936(Anti-ADAM32 Antibody) at a dilution of 1/15.



In comparison with the IHC on the left, the same paraffin-embedded Human breast cancer tissue is first treated with fusion protein and then with D221499(Anti-ADAM32 Antibody) at dilution 1/15.



Gel: 8%SDS-PAGE, Lysate: 40 µg;  
Lane: Human testis tissue;  
Primary antibody: 216936(ADAM32 Antibody) at dilution 1/100;  
Secondary antibody: Goat anti rabbit IgG at 1/8000 dilution;  
Exposure time: 10 minutes



# Product Description

Pioneering GTPase and Oncogene Product Development since 2010

---