

## ADAM7 RABBIT PAB

**Cat.#:** S216940

**Product Name:** Anti-ADAM7 Rabbit Polyclonal Antibody

**Synonyms:** EAPI; GP83; GP-83; ADAM 7; ADAM-7

**UNIPROT ID:** Q9H2U9 (Gene Accession - BC058037 )

**Background:** This gene encodes a member of the ADAMs family of zinc proteases. These transmembrane proteins play roles in multiple processes including cell signaling, adhesion and migration. The encoded protein lacks protease activity and may play roles in protein-protein interactions and cell adhesion processes including sperm-egg fusion. Mutations in this gene may be involved in the progression of melanoma.

**Immunogen:** Fusion protein of human ADAM7

**Applications:** ELISA, IHC

**Recommended Dilutions:** IHC: 25-100; ELISA: 2000-5000

**Host Species:** Rabbit

**Clonality:** Rabbit Polyclonal

**Isotype:** Immunogen-specific rabbit IgG

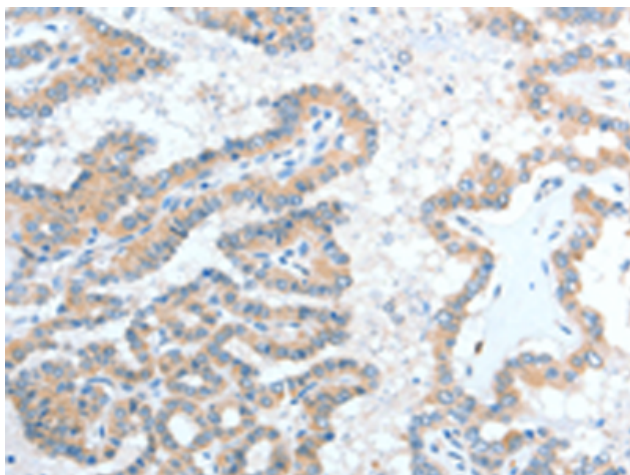
**Purification:** Antigen affinity purification

**Species Reactivity:** Human

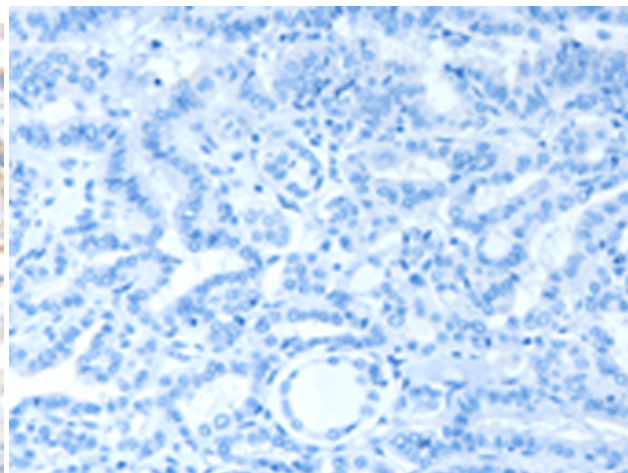
**Constituents:** PBS (without Mg<sup>2+</sup> and Ca<sup>2+</sup>), pH 7.4, 150 mM NaCl, 0.05% Sodium Azide and 40% glycerol

**Research Areas:** Signal Transduction

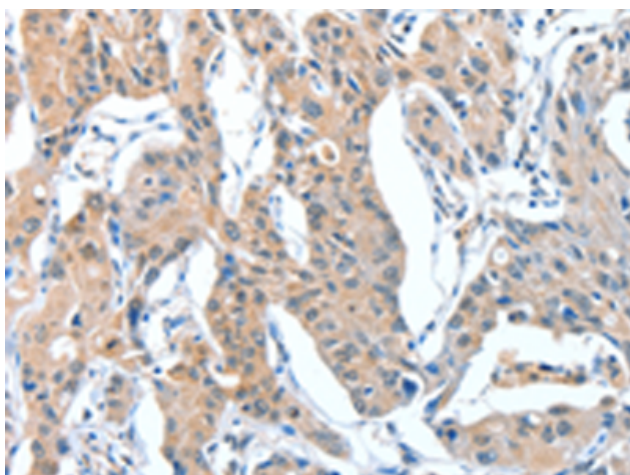
**Storage & Shipping:** Store at -20°C. Avoid repeated freezing and thawing



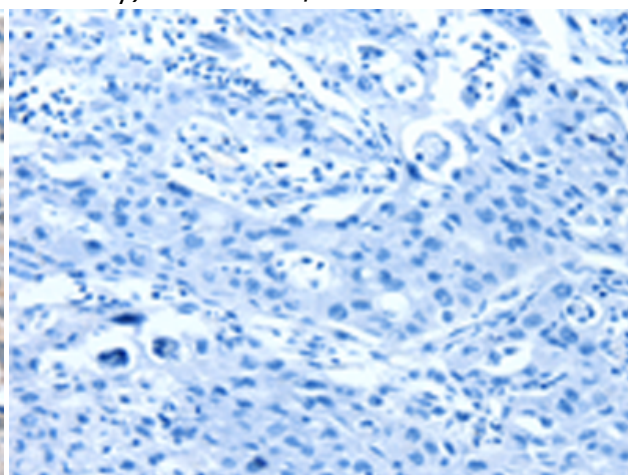
Immunohistochemistry analysis of paraffin embedded Human thyroid cancer tissue using 216940 (ADAM7 Antibody) at a dilution of 1/20 (Cytoplasm).



In comparison with the IHC on the left, the same paraffin-embedded Human thyroid cancer tissue is first treated with the fusion protein and then with 216940 (Anti-ADAM7 Antibody) at dilution 1/20.



The image on the left is immunohistochemistry of paraffin-embedded Human lung cancer tissue using 216940 (Anti-ADAM7 Antibody) at a dilution of 1/20.



In comparison with the IHC on the left, the same paraffin-embedded Human lung cancer tissue is first treated with fusion protein and then with D221503 (Anti-ADAM7 Antibody) at dilution 1/20.