

## ADAMTS14 RABBIT PAB

**Cat.#:** S214042

**Product Name:** Anti-ADAMTS14 Rabbit Polyclonal Antibody

**Synonyms:**

**UNIPROT ID:** Q8WXS8 (Gene Accession - NP\_542453 )

**Background:** This gene encodes a member of the ADAMTS (a disintegrin and metalloproteinase with thrombospondin motif) protein family. Members of the family share several distinct protein modules, including a propeptide region, a metalloproteinase domain, a disintegrin-like domain, and a thrombospondin type 1 (TS) motif. Individual members of this family differ in the number of C-terminal TS motifs, and some have unique C-terminal domains. This gene is highly similar to two family members, ADAMTS2 and ADAMTS3, in its sequence and gene structure, and the encoded protein shares the aminoprocollagen peptidase activity with the protein products encoded by ADAMTS2 and ADAMTS3. Various transcript variants of this gene have been identified. They result from the use of two different promoters and transcription initiation sites as well as alternative splicing sites. The full length nature of some transcripts has not been defined.

**Immunogen:** Synthetic peptide of human ADAMTS14

**Applications:** ELISA, IHC

**Recommended Dilutions:** IHC: 25-100; ELISA: 2000-5000

**Host Species:** Rabbit

**Clonality:** Rabbit Polyclonal

**Isotype:** Immunogen-specific rabbit IgG

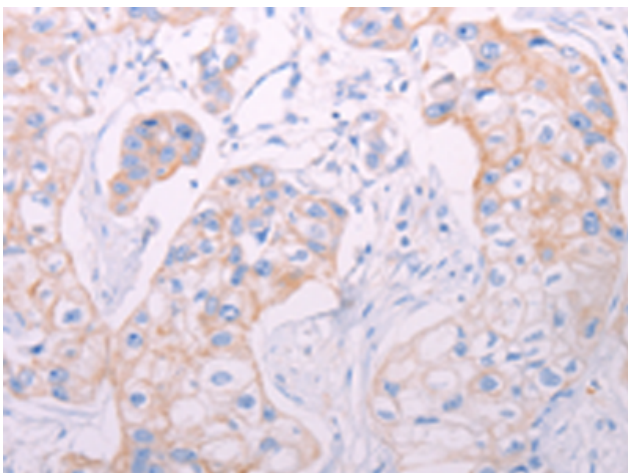
**Purification:** Antigen affinity purification

**Species Reactivity:** Human

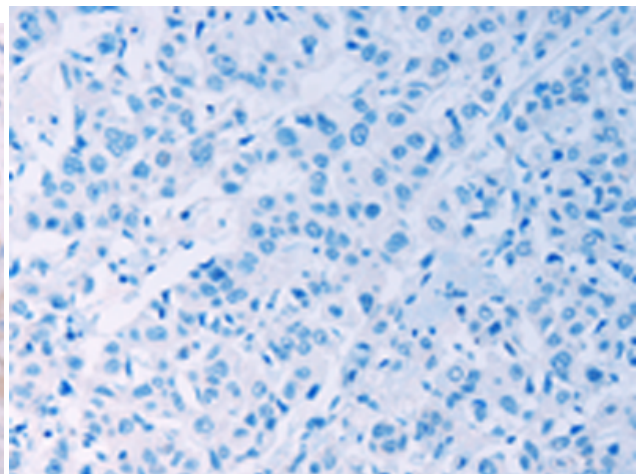
**Constituents:** PBS (without Mg<sup>2+</sup> and Ca<sup>2+</sup>), pH 7.4, 150 mM NaCl, 0.05% Sodium Azide and 40% glycerol

**Research Areas:** Signal Transduction, Cell Biology

**Storage & Shipping:** Store at -20°C. Avoid repeated freezing and thawing



Immunohistochemistry analysis of paraffin embedded Human breast cancer tissue using 214042(ADAMTS14 Antibody) at a dilution of 1/50(Cytoplasm).



In comparison with the IHC on the left, the same paraffin-embedded Human breast cancer tissue is first treated with the synthetic peptide and then with 214042(Anti-ADAMTS14 Antibody) at dilution 1/50.



# Product Description

Pioneering GTPase and Oncogene Product Development since 2010

---