

## ADAMTS6 RABBIT PAB

**Cat.#:** S220032

**Product Name:** Anti-ADAMTS6 Rabbit Polyclonal Antibody

**Synonyms:** ADAM-TS6; ADAMTS-6; ADAM-TS 6

**UNIPROT ID:** Q9UKP5 (Gene Accession - NP\_922932 )

**Background:** This gene encodes a member of the ADAMTS (a disintegrin and metalloproteinase with thrombospondin motifs) protein family. Members of the family share several distinct protein modules, including a propeptide region, a metalloproteinase domain, a disintegrin-like domain, and a thrombospondin type 1 (TS) motif. Individual members of this family differ in the number of C-terminal TS motifs, and some have unique C-terminal domains.

**Immunogen:** Synthetic peptide of human ADAMTS6

**Applications:** ELISA, IHC

**Recommended Dilutions:** IHC: 15-50; ELISA: 1000-5000

**Host Species:** Rabbit

**Clonality:** Rabbit Polyclonal

**Isotype:** Immunogen-specific rabbit IgG

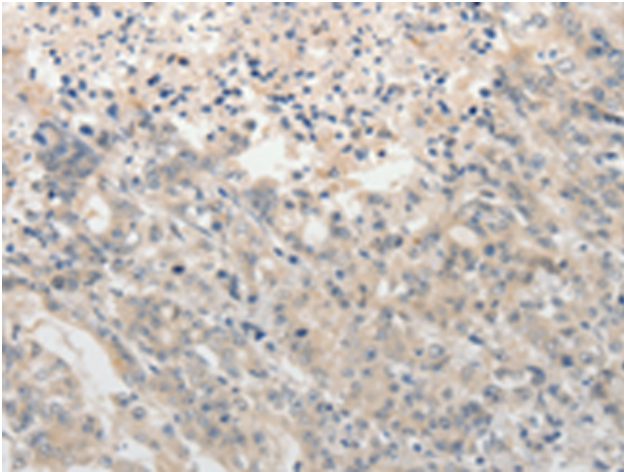
**Purification:** Antigen affinity purification

**Species Reactivity:** Human

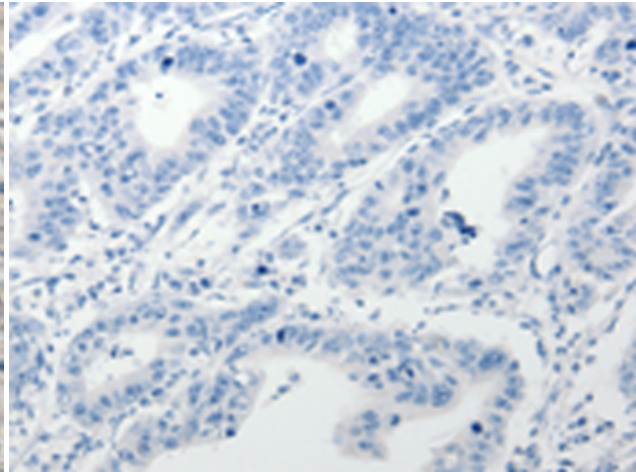
**Constituents:** PBS (without Mg<sup>2+</sup> and Ca<sup>2+</sup>), pH 7.4, 150 mM NaCl, 0.05% Sodium Azide and 40% glycerol

**Research Areas:** Signal Transduction, Cell Biology

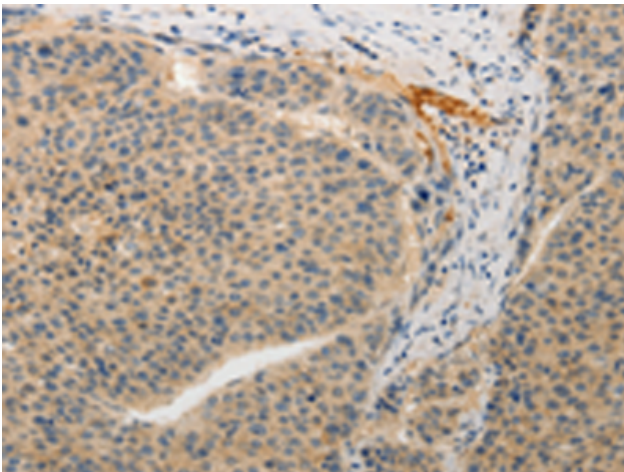
**Storage & Shipping:** Store at -20°C. Avoid repeated freezing and thawing



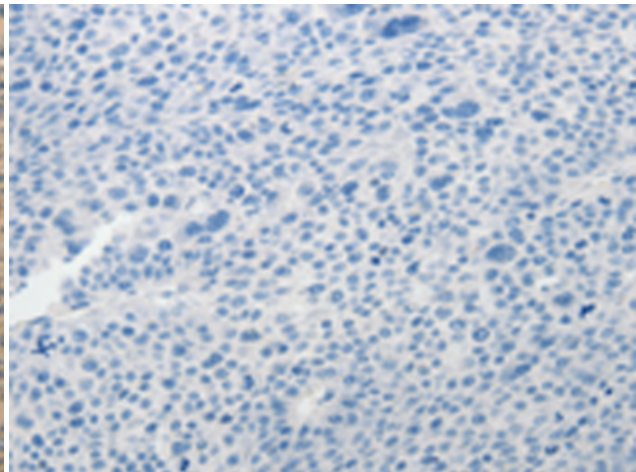
Immunohistochemistry analysis of paraffin embedded Human gastric cancer tissue using 220032(ADAMTS6 Antibody) at a dilution of 1/15(Secreted, ExtraCellular space, ExtraCellular matrix).



In comparison with the IHC on the left, the same paraffin-embedded Human gastric cancer tissue is first treated with the synthetic peptide and then with 220032(Anti-ADAMTS6 Antibody) at dilution 1/15.



The image on the left is immunohistochemistry of paraffin-embedded Human liver cancer tissue using 220032(Anti-ADAMTS6 Antibody) at a dilution of 1/15.



In comparison with the IHC on the left, the same paraffin-embedded Human liver cancer tissue is first treated with synthetic peptide and then with D260826(Anti-ADAMTS6 Antibody) at dilution 1/15.