

## ADAMTSL1 RABBIT PAB

**Cat.#:** S216941

**Product Name:** Anti-ADAMTSL1 Rabbit Polyclonal Antibody

**Synonyms:** C9orf94; PUNCTIN; ADAMTSR1; ADAMTSL-1

**UNIPROT ID:** Q8N6G6 (Gene Accession - BC100788 )

**Background:** This gene encodes a secreted protein and member of the ADAMTS (a disintegrin and metalloproteinase with thrombospondin motif) family. This protein lacks the metalloproteinase and disintegrin-like domains, which are typical of the ADAMTS family, but contains other ADAMTS domains, including the thrombospondin type I motif. This protein may have important functions in the extracellular matrix. Alternative splicing results in multiple transcript variants encoding distinct proteins.

**Immunogen:** Fusion protein of human ADAMTSL1

**Applications:** ELISA, IHC

**Recommended Dilutions:** IHC: 15–50; ELISA: 1000–2000

**Host Species:** Rabbit

**Clonality:** Rabbit Polyclonal

**Isotype:** Immunogen-specific rabbit IgG

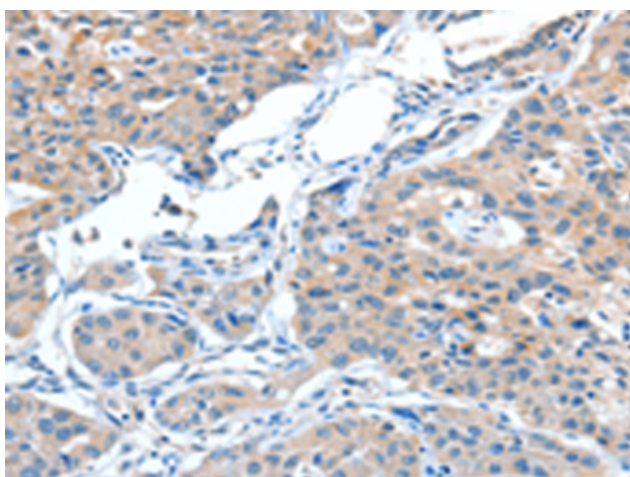
**Purification:** Antigen affinity purification

**Species Reactivity:** Human, Mouse

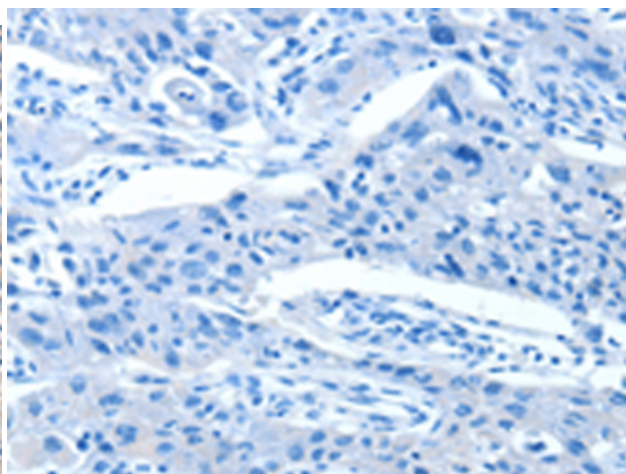
**Constituents:** PBS (without Mg<sup>2+</sup> and Ca<sup>2+</sup>), pH 7.4, 150 mM NaCl, 0.05% Sodium Azide and 40% glycerol

**Research Areas:** Signal Transduction

**Storage & Shipping:** Store at -20°C. Avoid repeated freezing and thawing



Immunohistochemistry analysis of paraffin embedded Human lung cancer tissue using 216941(ADAMTSL1 Antibody) at a dilution of 1/15(Cytoplasm).



In comparison with the IHC on the left, the same paraffin-embedded Human lung cancer tissue is first treated with the fusion protein and then with 216941(Anti-ADAMTSL1 Antibody) at dilution 1/15.