

## ADCY3 RABBIT PAB

**Cat.#:** S217180

**Product Name:** Anti-ADCY3 Rabbit Polyclonal Antibody

**Synonyms:** AC3; AC-III; BMIQ19

**UNIPROT ID:** O60266 (Gene Accession - BC126235 )

**Background:** This gene encodes adenylyl cyclase 3 which is a membrane-associated enzyme and catalyzes the formation of the secondary messenger cyclic adenosine monophosphate (cAMP). This protein appears to be widely expressed in various human tissues and may be involved in a number of physiological and pathophysiological metabolic processes. Two transcript variants encoding different isoforms have been found for this gene.

**Immunogen:** Fusion protein of human ADCY3

**Applications:** ELISA, IHC

**Recommended Dilutions:** IHC: 50-200; ELISA: 5000-10000

**Host Species:** Rabbit

**Clonality:** Rabbit Polyclonal

**Isotype:** Immunogen-specific rabbit IgG

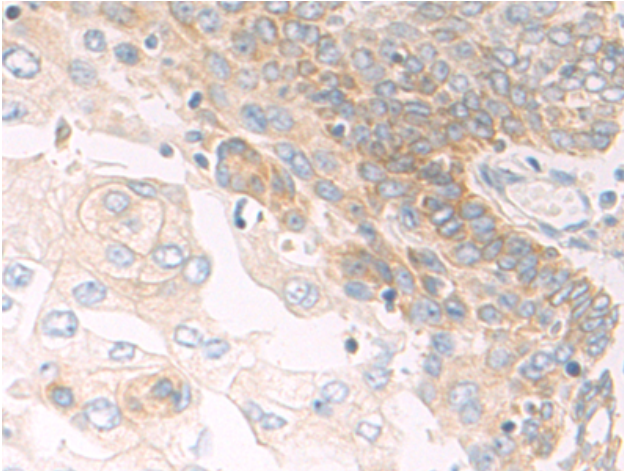
**Purification:** Antigen affinity purification

**Species Reactivity:** Human, Mouse, Rat

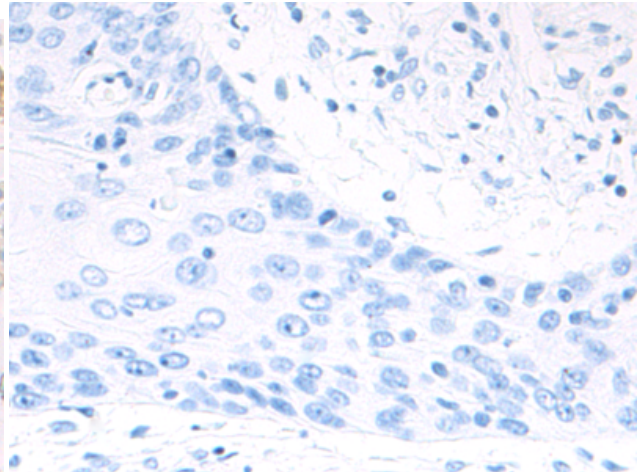
**Constituents:** PBS (without Mg<sup>2+</sup> and Ca<sup>2+</sup>), pH 7.4, 150 mM NaCl, 0.05% Sodium Azide and 40% glycerol

**Research Areas:** Signal Transduction, Cancer, Metabolism

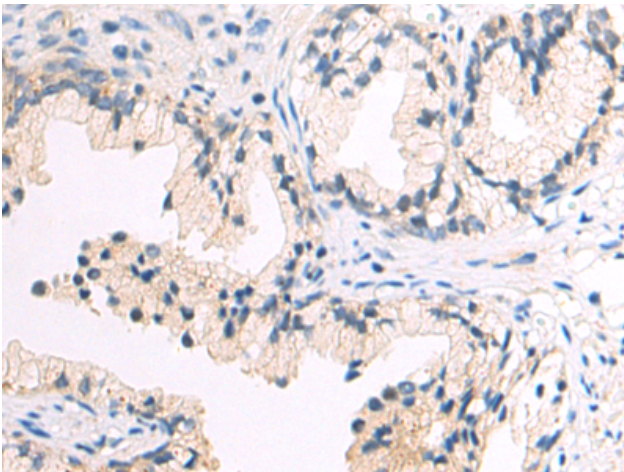
**Storage & Shipping:** Store at -20°C. Avoid repeated freezing and thawing



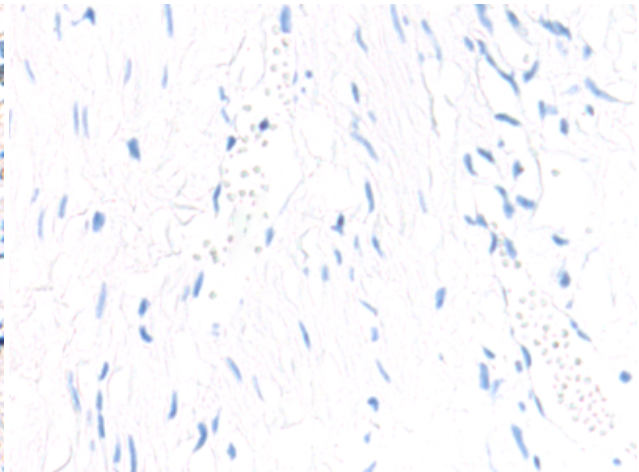
Immunohistochemistry analysis of paraffin-embedded Human esophagus cancer tissue using 217180 (ADCY3 Antibody) at a dilution of 1/75 (Cytoplasm).



In comparison with the IHC on the left, the same paraffin-embedded Human esophagus cancer tissue is first treated with the fusion protein and then with 217180 (Anti-ADCY3 Antibody) at dilution 1/75.



The image on the left is immunohistochemistry of paraffin-embedded Human prostate cancer tissue using 217180 (Anti-ADCY3 Antibody) at a dilution of 1/75.



In comparison with the IHC on the left, the same paraffin-embedded Human prostate cancer tissue is first treated with fusion protein and then with D221930 (Anti-ADCY3 Antibody) at dilution 1/75.