

## ADENOSINE A1 RECEPTOR RABBIT MAB

**Cat.#:** N261797

**Product Name:** Anti-Adenosine A1 Receptor Rabbit Monoclonal Antibody

**Synonyms:** ADORA1; Adenosine receptor A1

**UNIPROT ID:** P30542

**Background:** Receptor for adenosine. The activity of this receptor is mediated by G proteins which inhibit adenylyl cyclase.

**Immunogen:** A synthetic peptide of human Adenosine A1 Receptor

**Applications:** WB,ICC/IF,IP

**Recommended Dilutions:** WB: 1/500-1/1000 IF: 1/50-1/200 IP: 1/20

**Host Species:** Rabbit

**Clonality:** Rabbit Monoclonal

**Clone ID:** R05-9E6

**MW:** Calculated MW: 37 kDa; Observed MW: 37 kDa

**Isotype:** IgG

**Purification:** Affinity Purified

**Species Reactivity:** Human,Mouse,Rat

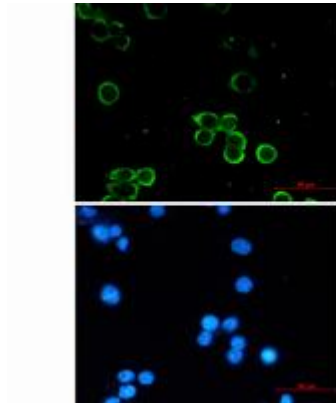
**Conjugation:** Unconjugated

**Modification:** Unmodified

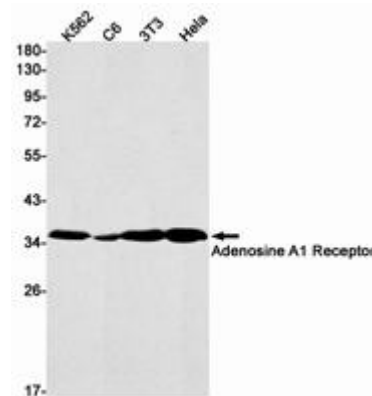
**Constituents:** PBS (without Mg<sup>2+</sup> and Ca<sup>2+</sup>), pH 7.3 containing 50% glycerol, 0.5% BSA and 0.02% sodium azide

**Research Areas:** Neuroscience Receptor

**Storage & Shipping:** Store at -20°C. Avoid repeated freezing and thawing



Immunocytochemistry analysis of Adenosine A1 Receptor (green) in MCF-7 using Adenosine A1 Receptor antibody, and DAPI (blue)



Western blot analysis of Adenosine A1 Receptor in K562, C6, 3T3, HeLa lysates using Adenosine A1 Receptor antibody.