

## ADGRF1 RABBIT PAB

**Cat.#:** S222102

**Product Name:** Anti-ADGRF1 Rabbit Polyclonal Antibody

**Synonyms:** PGR19; GPR110; KPG\_012; hGPCR36

**UNIPROT ID:** Q5T601 (Gene Accession - NP\_722582 )

**Background:** Orphan receptor.

**Immunogen:** Synthetic peptide of human ADGRF1

**Applications:** ELISA, IHC

**Recommended Dilutions:** IHC: 30-150; ELISA: 5000-10000

**Host Species:** Rabbit

**Clonality:** Rabbit Polyclonal

**Isotype:** Immunogen-specific rabbit IgG

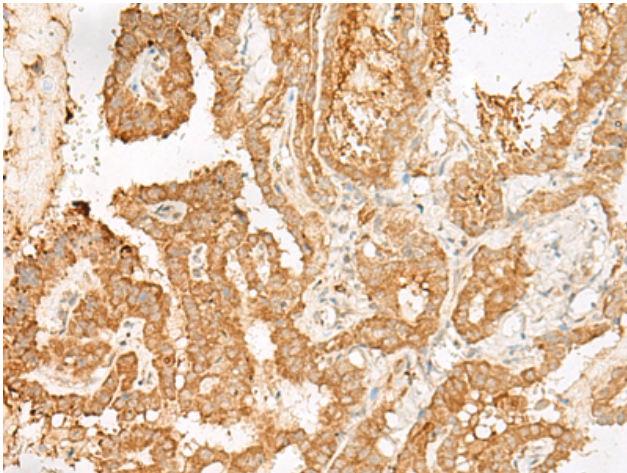
**Purification:** Antigen affinity purification

**Species Reactivity:** Human

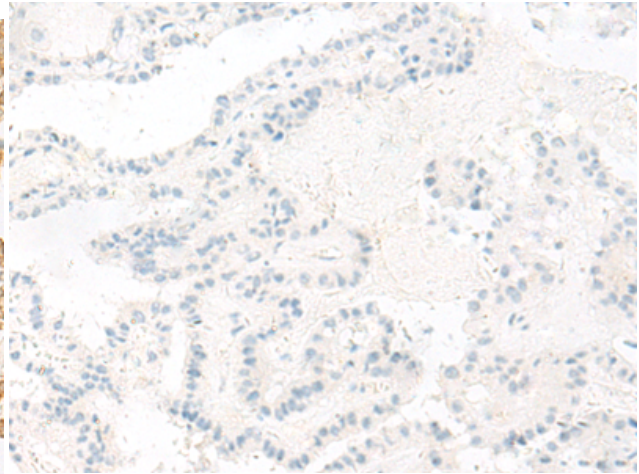
**Constituents:** PBS (without Mg<sup>2+</sup> and Ca<sup>2+</sup>), pH 7.4, 150 mM NaCl, 0.05% Sodium Azide and 40% glycerol

**Research Areas:** Signal Transduction, Neuroscience

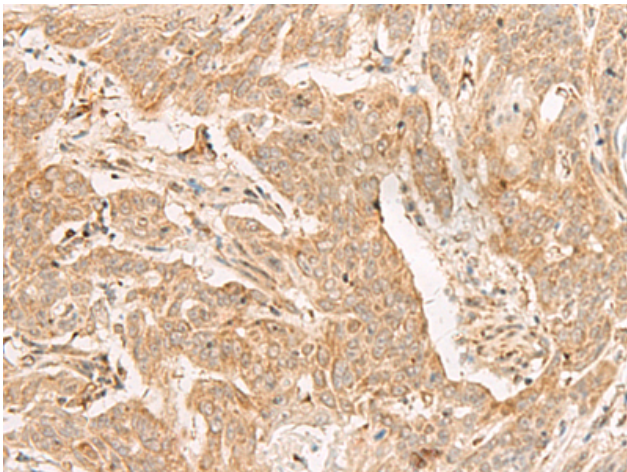
**Storage & Shipping:** Store at -20°C. Avoid repeated freezing and thawing



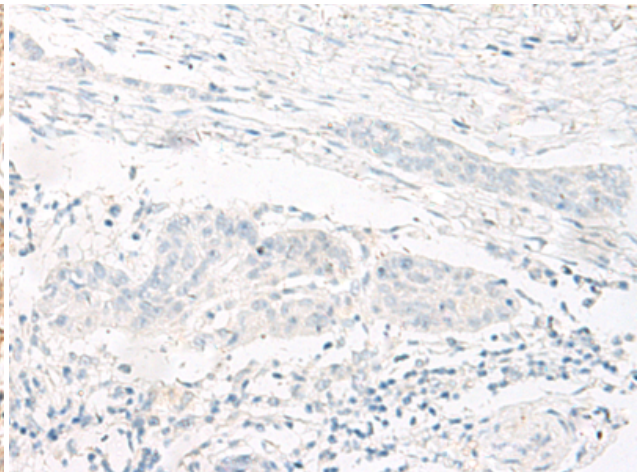
Immunohistochemistry analysis of paraffin-embedded Human thyroid cancer tissue using 222102(ADGRF1 Antibody) at a dilution of 1/25(Cell membrane).



In comparison with the IHC on the left, the same paraffin-embedded Human thyroid cancer tissue is first treated with the synthetic peptide and then with 222102(Anti-ADGRF1 Antibody) at dilution 1/25.



The image on the left is immunohistochemistry of paraffin-embedded Human esophagus cancer tissue using 222102(Anti-ADGRF1 Antibody) at a dilution of 1/25.



In comparison with the IHC on the left, the same paraffin-embedded Human esophagus cancer tissue is first treated with synthetic peptide and then with D264023(Anti-ADGRF1 Antibody) at dilution 1/25.