

ADGRF5 RABBIT PAB

Cat.#: S222101

Product Name: Anti-ADGRF5 Rabbit Polyclonal Antibody

Synonyms: GPR116; KPG_001

UNIPROT ID: Q8IZF2 (Gene Accession - NP_056049)

Background: Receptor that plays a critical role in lung surfactant homeostasis. May play a role in controlling adipocyte function.

Immunogen: Synthetic peptide of human ADGRF5

Applications: ELISA, WB, IHC

Recommended Dilutions: IHC: 30-150;WB: 200-1000;ELISA: 5000-10000

Host Species: Rabbit

Clonality: Rabbit Polyclonal

Isotype: Immunogen-specific rabbit IgG

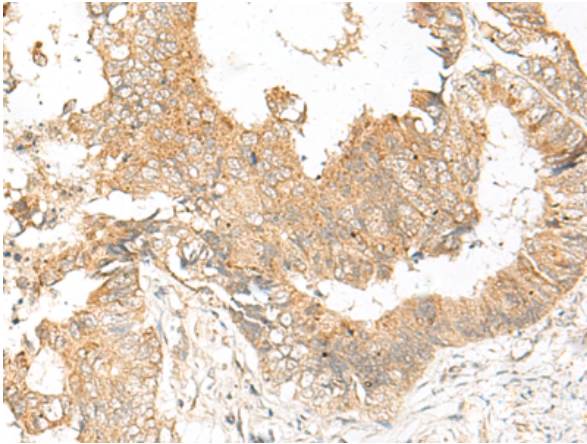
Purification: Antigen affinity purification

Species Reactivity: Human

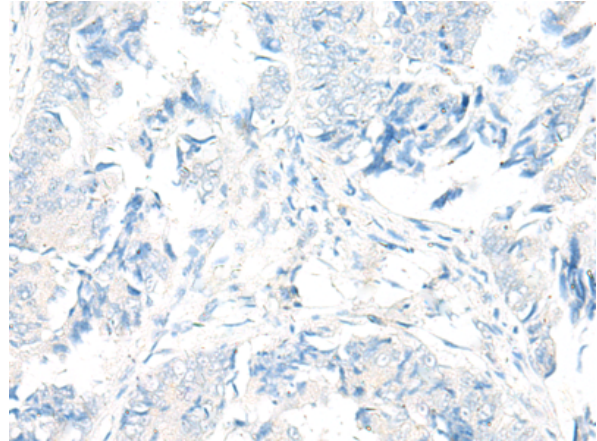
Constituents: PBS (without Mg²⁺ and Ca²⁺), pH 7.4, 150 mM NaCl, 0.05% Sodium Azide and 40% glycerol

Research Areas: Signal Transduction, Neuroscience

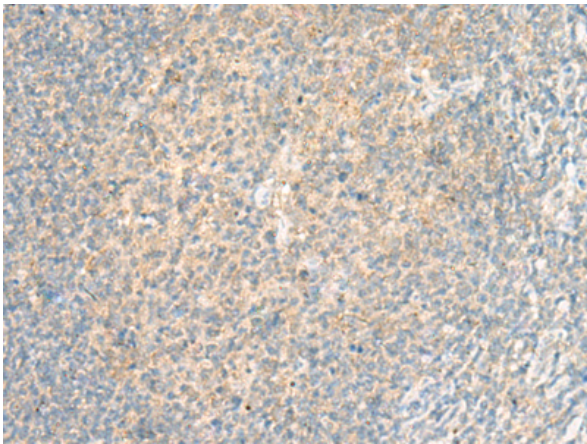
Storage & Shipping: Store at -20°C. Avoid repeated freezing and thawing



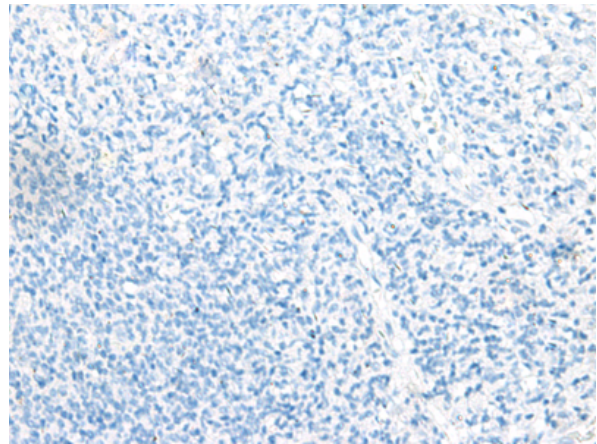
Immunohistochemistry analysis of paraffin embedded Human colorectal cancer tissue using 222101(ADGRF5 Antibody) at a dilution of 1/35(Cell membrane).



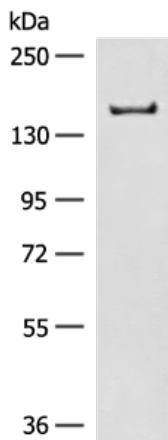
In comparison with the IHC on the left, the same paraffin-embedded Human colorectal cancer tissue is first treated with the synthetic peptide and then with 222101(Anti-ADGRF5 Antibody) at dilution 1/35.



The image on the left is immunohistochemistry of paraffin-embedded Human tonsil tissue using 222101(Anti-ADGRF5 Antibody) at a dilution of 1/35.



In comparison with the IHC on the left, the same paraffin-embedded Human tonsil tissue is first treated with synthetic peptide and then with D264022(Anti-ADGRF5 Antibody) at dilution 1/35.



Gel: 6%SDS-PAGE, Lysate: 40 µg;
Lane: 293T cell lysate;
Primary antibody: 222101(ADGRF5 Antibody) at dilution 1/250;
Secondary antibody: Goat anti rabbit IgG at 1/8000 dilution;
Exposure time: 90 seconds



Product Description

Pioneering GTPase and Oncogene Product Development since 2010
