

## ADGRL4 RABBIT PAB

**Cat.#:** S221982

**Product Name:** Anti-ADGRL4 Rabbit Polyclonal Antibody

**Synonyms:** ETL; ELTD1; KPG\_003

**UNIPROT ID:** Q9HBW9 (Gene Accession - NP\_071442)

**Background:** Endothelial orphan receptor that acts as a key regulator of angiogenesis.

**Immunogen:** Synthetic peptide of human ADGRL4

**Applications:** ELISA, IHC

**Recommended Dilutions:** IHC: 25-50; ELISA: 5000-10000

**Host Species:** Rabbit

**Clonality:** Rabbit Polyclonal

**Isotype:** Immunogen-specific rabbit IgG

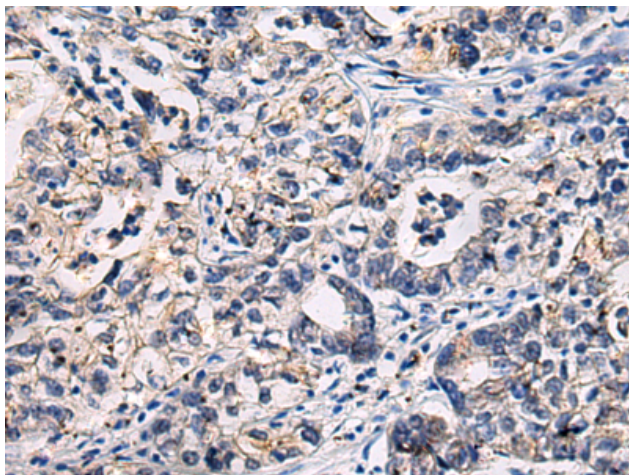
**Purification:** Antigen affinity purification

**Species Reactivity:** Human, Mouse, Rat

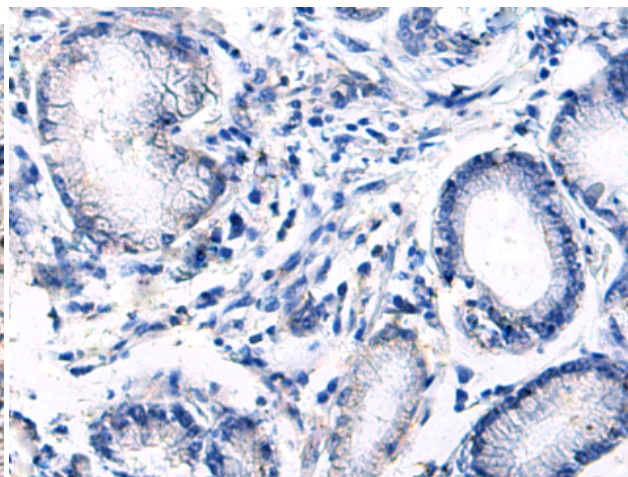
**Constituents:** PBS (without Mg<sup>2+</sup> and Ca<sup>2+</sup>), pH 7.4, 150 mM NaCl, 0.05% Sodium Azide and 40% glycerol

**Research Areas:** Signal Transduction

**Storage & Shipping:** Store at -20°C. Avoid repeated freezing and thawing



Immunohistochemistry analysis of paraffin embedded Human gastric cancer tissue using 221982(ADGRL4 Antibody) at a dilution of 1/35(Cytoplasm).



In comparison with the IHC on the left, the same paraffin-embedded Human gastric cancer tissue is first treated with the synthetic peptide and then with 221982(Anti-ADGRL4 Antibody) at dilution 1/35.