

ADIPONECTIN RABBIT MAB

Cat.#: N261799

Product Name: Anti-Adiponectin Rabbit Monoclonal Antibody

Synonyms: ACDC; ADPN; APMI; APM-1; GBP28; ACRP30; ADIPQTL1

UNIPROT ID: Q15848

Background: This gene is expressed in adipose tissue exclusively. It encodes a protein with similarity to collagens X and VIII and complement factor C1q. The encoded protein circulates in the plasma and is involved with metabolic and hormonal processes. Mutations in this gene are associated with adiponectin deficiency. Multiple alternatively spliced variants, encoding the same protein, have been identified.

Immunogen: A synthetic peptide of human Adiponectin

Applications: WB,IP

Recommended Dilutions: WB: 1/500-1/1000 IP: 1/20

Host Species: Rabbit

Clonality: Rabbit Monoclonal

Clone ID: R03-9F3

MW: Calculated MW: 26 kDa; Observed MW: 30 kDa

Isotype: IgG

Purification: Affinity Purified

Species Reactivity: Human

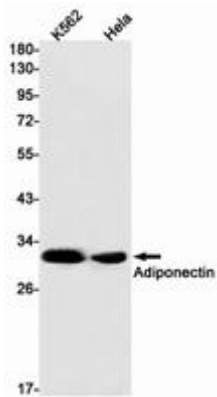
Conjugation: Unconjugated

Modification: Unmodified

Constituents: PBS (without Mg²⁺ and Ca²⁺), pH 7.3 containing 50% glycerol, 0.5% BSA and 0.02% sodium azide

Research Areas: Cardiovascular

Storage & Shipping: Store at -20°C. Avoid repeated freezing and thawing



Western blot analysis of Adiponectin in K562, HeLa lysates using Adiponectin antibody.