

ADO RABBIT PAB

Cat.#: S219619

Product Name: Anti-ADO Rabbit Polyclonal Antibody

Synonyms: C10orf22

UNIPROT ID: Q96SZ5 (Gene Accession - NP_116193)

Background: Human thiol dioxygenases include cysteine dioxygenase (CDO; MIM 603943) and cysteamine (2-aminoethanethiol) dioxygenase (ADO; EC 1.13.11.19). CDO adds 2 oxygen atoms to free cysteine, whereas ADO adds 2 oxygen atoms to free cysteamine to form hypotaurine.

Immunogen: Synthetic peptide of human ADO

Applications: ELISA, WB, IHC

Recommended Dilutions: IHC: 50-200;WB: 500-2000;ELISA: 5000-10000

Host Species: Rabbit

Clonality: Rabbit Polyclonal

Isotype: Immunogen-specific rabbit IgG

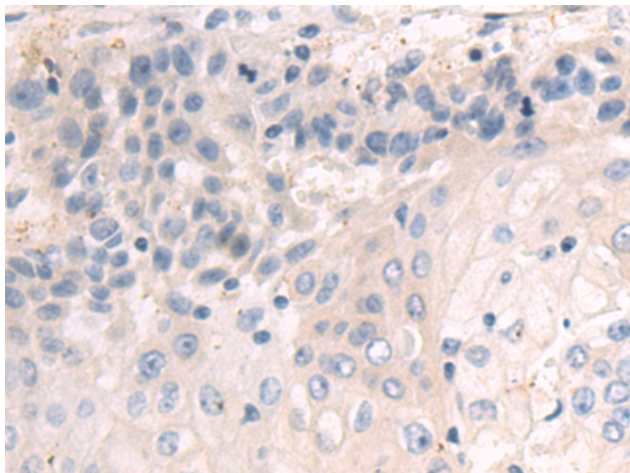
Purification: Antigen affinity purification

Species Reactivity: Human, Mouse

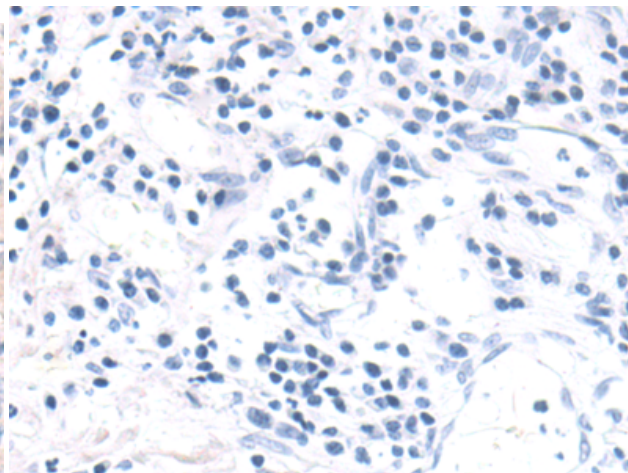
Constituents: PBS (without Mg²⁺ and Ca²⁺), pH 7.4, 150 mM NaCl, 0.05% Sodium Azide and 40% glycerol

Research Areas: Metabolism

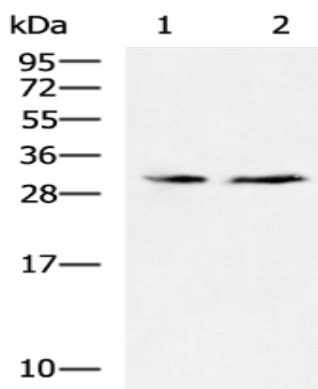
Storage & Shipping: Store at -20°C. Avoid repeated freezing and thawing



Immunohistochemistry analysis of paraffin embedded Human esophagus cancer tissue using 219619(ADO Antibody) at a dilution of 1/50(Cytoplasm).



In comparison with the IHC on the left, the same paraffin-embedded Human esophagus cancer tissue is first treated with the synthetic peptide and then with 219619(Anti-ADO Antibody) at dilution 1/50.



Gel: 12%SDS-PAGE, Lysate: 40 µg;
 Lane 1-2: Mouse brain tissue, Mouse testis tissue lysates ;
 Primary antibody: 219619(ADO Antibody) at dilution 1/600;
 Secondary antibody: HRP-conjugated Goat anti rabbit IgG at 1/5000 dilution;
 Exposure time: 30 seconds