

## AF10 RABBIT MAB

**Cat.#:** N261807

**Product Name:** Anti-AF10 Rabbit Monoclonal Antibody

**Synonyms:** MLLT10; AF10; Protein AF-10; ALL1-fused gene from chromosome 10 protein

**UNIPROT ID:** P55197

**Background:** Probably involved in transcriptional regulation. In vitro or as fusion protein with KMT2A/MLL1 has transactivation activity. Binds to cruciform DNA. In cells, binding to unmodified histone H3 regulates DOT1L functions including histone H3 'Lys-79' dimethylation (H3K79me2) and gene activation (PubMed:26439302).

**Immunogen:** Recombinant protein of human AF10

**Applications:** WB,IHC-P

**Recommended Dilutions:** WB: 1/500-1/1000 IHC: 1/50-1/100

**Host Species:** Rabbit

**Clonality:** Rabbit Monoclonal

**Clone ID:** R07-2G2

**MW:** Calculated MW: 113 kDa; Observed MW: 140 kDa

**Isotype:** IgG

**Purification:** Affinity Purified

**Species Reactivity:** Human

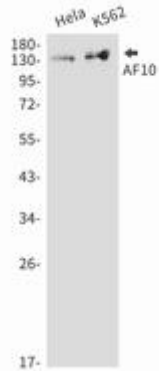
**Conjugation:** Unconjugated

**Modification:** Unmodified

**Constituents:** PBS (without Mg<sup>2+</sup> and Ca<sup>2+</sup>), pH 7.3 containing 50% glycerol, 0.5% BSA and 0.02% sodium azide

**Research Areas:** Epigenetics and Nuclear Signaling

**Storage & Shipping:** Store at -20°C. Avoid repeated freezing and thawing



Western blot analysis of AF10 in HeLa, K562 lysates using AF10 antibody.