

AGBL2 RABBIT PAB

Cat.#: S216956

Product Name: Anti-AGBL2 Rabbit Polyclonal Antibody

Synonyms: CCP2

UNIPROT ID: Q5U5Z8 (Gene Accession - BC028200)

Background: AGBL2 is a 902 amino acid cytoplasmic protein belonging to the peptidase M14 family. CCP2 is considered a metalloprotease that may play a role in the processing of tubulin. CCP2 binds one zinc ion per subunit as a cofactor and exists as three alternatively spliced isoforms.

Immunogen: Fusion protein of human AGBL2

Applications: ELISA, WB, IHC

Recommended Dilutions: IHC: 25-100;WB: 200-1000;ELISA: 1000-2000

Host Species: Rabbit

Clonality: Rabbit Polyclonal

Isotype: Immunogen-specific rabbit IgG

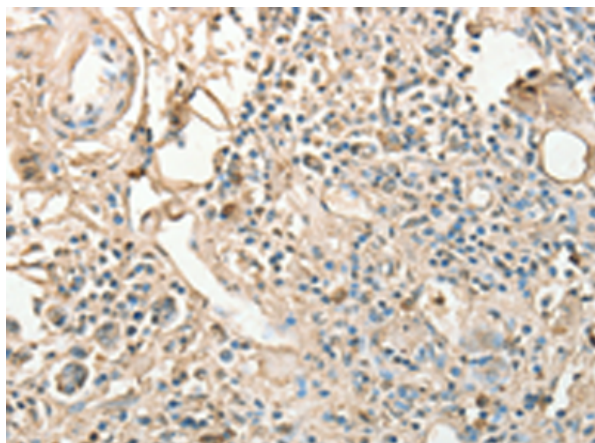
Purification: Antigen affinity purification

Species Reactivity: Human

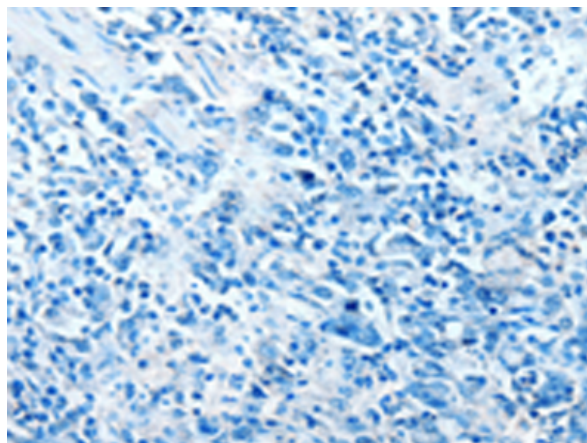
Constituents: PBS (without Mg²⁺ and Ca²⁺), pH 7.4, 150 mM NaCl, 0.05% Sodium Azide and 40% glycerol

Research Areas: Signal Transduction

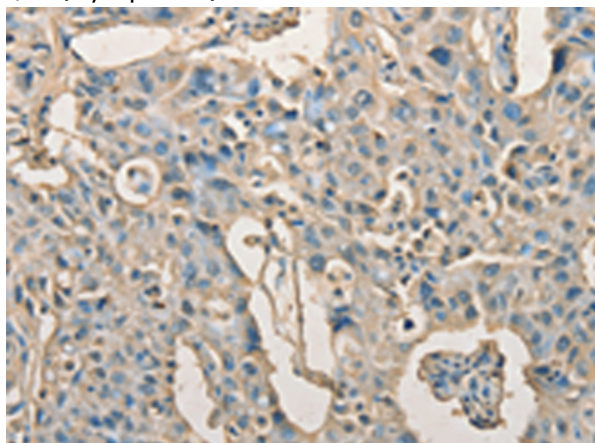
Storage & Shipping: Store at -20°C. Avoid repeated freezing and thawing



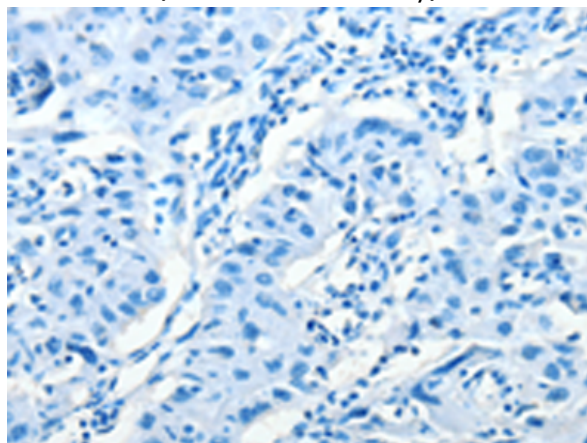
Immunohistochemistry analysis of paraffin embedded Human gastric cancer tissue using 216956(AGBL2 Antibody) at a dilution of 1/25(Cytoplasm).



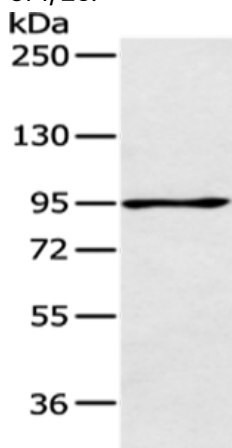
In comparison with the IHC on the left, the same paraffin-embedded Human gastric cancer tissue is first treated with the fusion protein and then with 216956(Anti-AGBL2 Antibody) at dilution 1/25.



The image on the left is immunohistochemistry of paraffin-embedded Human lung cancer tissue using 216956(Anti-AGBL2 Antibody) at a dilution of 1/25.



In comparison with the IHC on the left, the same paraffin-embedded Human lung cancer tissue is first treated with fusion protein and then with D221534(Anti-AGBL2 Antibody) at dilution 1/25.



Gel: 6%SDS-PAGE, Lysate: 40 µg;
Lane: 293T cell;
Primary antibody: 216956(AGBL2 Antibody) at dilution 1/200;
Secondary antibody: Goat anti rabbit IgG at 1/8000 dilution;
Exposure time: 1 minute



Product Description

Pioneering GTPase and Oncogene Product Development since 2010
