

## AGBL5 RABBIT PAB

**Cat.#:** S216957

**Product Name:** Anti-AGBL5 Rabbit Polyclonal Antibody

**Synonyms:**

**UNIPROT ID:** Q8NDL9 (Gene Accession - BC007415 )

**Background:** Metalloprotease that mediates tubulin deglutamylation. Specifically catalyzes the deglutamylation of the branching point glutamate side chains generated by post-translational glutamylation in proteins such as tubulins. In contrast, it is not able to act as a long-chain deglutamylase that shortens long polyglutamate chains, a process catalyzed by AGTPBP1/CCP1, AGBL1/CCP4 and AGBL4/CCP6.

**Immunogen:** Fusion protein of human AGBL5

**Applications:** ELISA, IHC

**Recommended Dilutions:** IHC: 25-100; ELISA: 2000-5000

**Host Species:** Rabbit

**Clonality:** Rabbit Polyclonal

**Isotype:** Immunogen-specific rabbit IgG

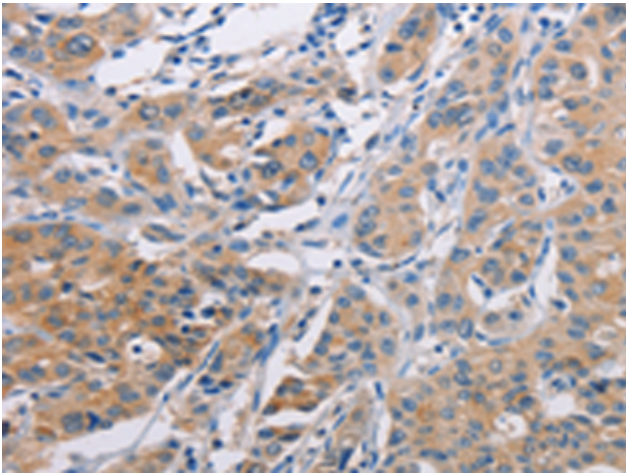
**Purification:** Antigen affinity purification

**Species Reactivity:** Human

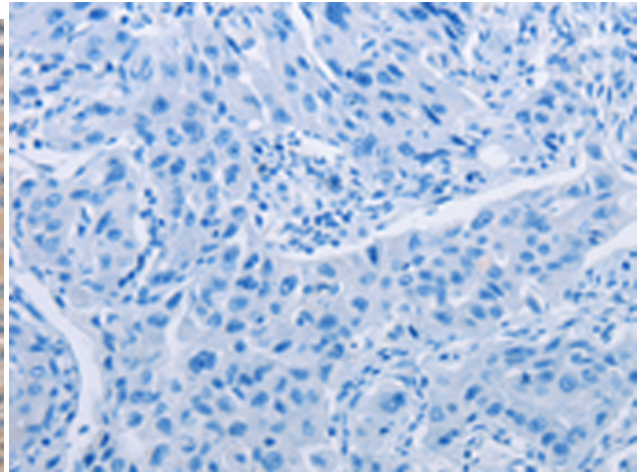
**Constituents:** PBS (without Mg<sup>2+</sup> and Ca<sup>2+</sup>), pH 7.4, 150 mM NaCl, 0.05% Sodium Azide and 40% glycerol

**Research Areas:** Cell Biology

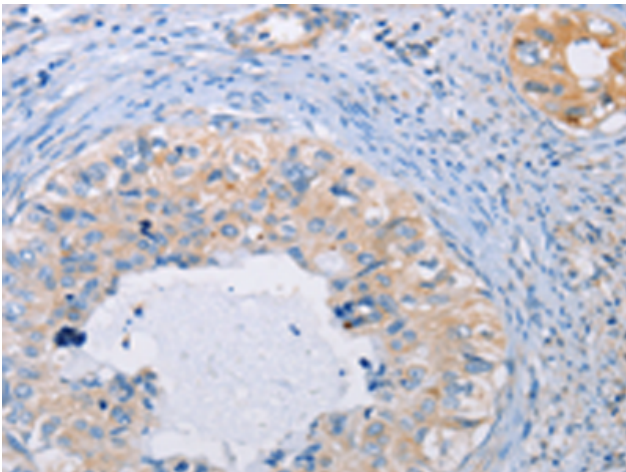
**Storage & Shipping:** Store at -20°C. Avoid repeated freezing and thawing



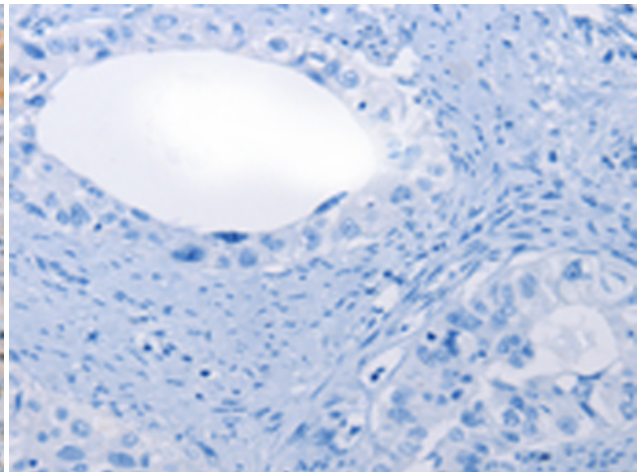
Immunohistochemistry analysis of paraffin embedded Human lung cancer tissue using 216957(AGBL5 Antibody) at a dilution of 1/30(Cytoplasm).



In comparison with the IHC on the left, the same paraffin-embedded Human lung cancer tissue is first treated with the fusion protein and then with 216957(Anti-AGBL5 Antibody) at dilution 1/30.



The image on the left is immunohistochemistry of paraffin-embedded Human cervical cancer tissue using 216957(Anti-AGBL5 Antibody) at a dilution of 1/30.



In comparison with the IHC on the left, the same paraffin-embedded Human cervical cancer tissue is first treated with fusion protein and then with D221535(Anti-AGBL5 Antibody) at dilution 1/30.