

AGER RABBIT PAB

Cat.#: S216226

Product Name: Anti-AGER Rabbit Polyclonal Antibody

Synonyms: RAGE

UNIPROT ID: Q15109 (Gene Accession - BC020669)

Background: The advanced glycosylation end product (AGE) receptor encoded by this gene is a member of the immunoglobulin superfamily of cell surface receptors. It is a multiligand receptor, and besides AGE, interacts with other molecules implicated in homeostasis, development, and inflammation, and certain diseases, such as diabetes and Alzheimer's disease. Many alternatively spliced transcript variants encoding different isoforms, as well as non-protein-coding variants, have been described for this gene.

Immunogen: Fusion protein of human AGER

Applications: ELISA, WB, IHC

Recommended Dilutions: IHC: 100-300;WB: 500-2000;ELISA: 2000-5000

Host Species: Rabbit

Clonality: Rabbit Polyclonal

Isotype: Immunogen-specific rabbit IgG

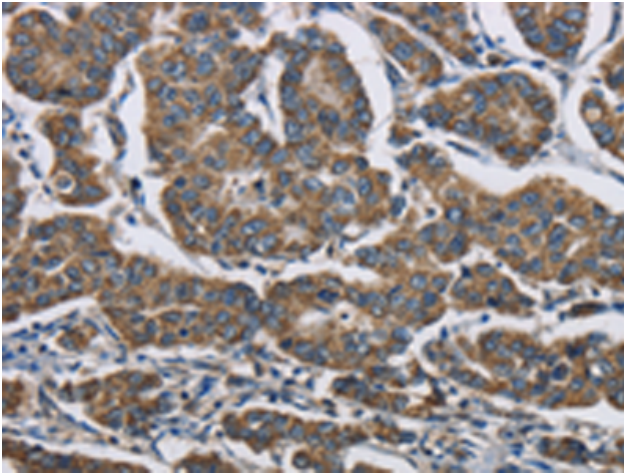
Purification: Antigen affinity purification

Species Reactivity: Human

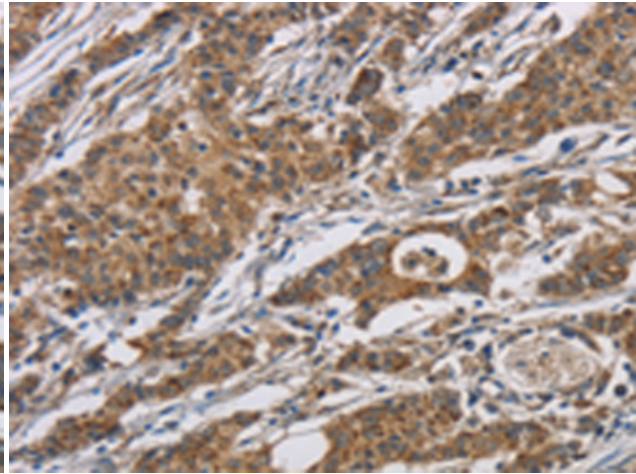
Constituents: PBS (without Mg²⁺ and Ca²⁺), pH 7.4, 150 mM NaCl, 0.05% Sodium Azide and 40% glycerol

Research Areas: Neuroscience, Cardiovascular

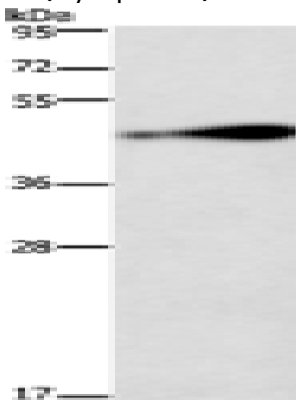
Storage & Shipping: Store at -20°C. Avoid repeated freezing and thawing



Immunohistochemistry analysis of paraffin-embedded Human breast cancer tissue using 216226(AGER Antibody) at a dilution of 1/70(Cytoplasm).



Immunohistochemistry analysis of paraffin-embedded Human gastric cancer tissue using 216226(Anti-AGER Antibody) at a dilution of 1/70.



Gel: 10%SDS-PAGE, Lysate: 40 µg;
Lane: 231 cells;
Primary antibody: 216226(AGER Antibody) at dilution 1/750;
Secondary antibody: Goat anti rabbit IgG at 1/8000 dilution;
Exposure time: 2 minutes