

## AGO2 RABBIT PAB

**Cat.#:** S216960

**Product Name:** Anti-AGO2 Rabbit Polyclonal Antibody

**Synonyms:** PPD; Q10; CASC7; EIF2C2; LESKRES; LINC00980

**UNIPROT ID:** Q9UKV8 (Gene Accession - BC018727 )

**Background:** This gene encodes a member of the Argonaute family of proteins which play a role in RNA interference. The encoded protein is highly basic, and contains a PAZ domain and a PIWI domain. It may interact with dicer1 and play a role in short-interfering-RNA-mediated gene silencing. Multiple transcript variants encoding different isoforms have been found for this gene.

**Immunogen:** Fusion protein of human AGO2

**Applications:** ELISA, IHC

**Recommended Dilutions:** IHC: 50-100; ELISA: 5000-10000

**Host Species:** Rabbit

**Clonality:** Rabbit Polyclonal

**Isotype:** Immunogen-specific rabbit IgG

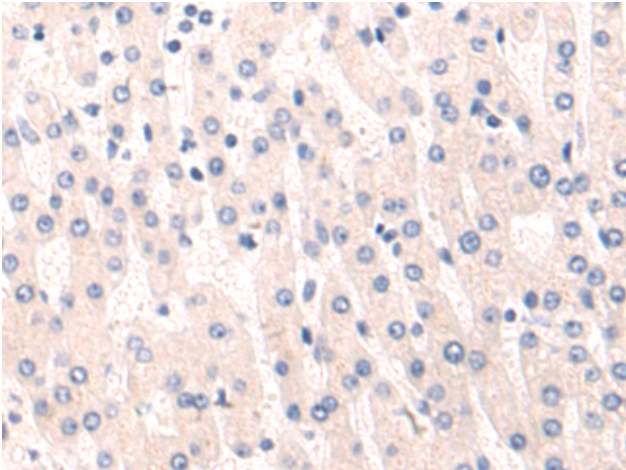
**Purification:** Antigen affinity purification

**Species Reactivity:** Human, Mouse, Rat


**Constituents:** PBS (without Mg<sup>2+</sup> and Ca<sup>2+</sup>), pH 7.4, 150 mM NaCl, 0.05% Sodium Azide and 40% glycerol

**Research Areas:** Epigenetics and Nuclear Signaling

**Storage & Shipping:** Store at -20°C. Avoid repeated freezing and thawing



Immunohistochemistry analysis of paraffin embedded Human liver cancer tissue using 216960(AGO2 Antibody) at a dilution of 1/55(Cytoplasm).

 In comparison with the IHC on the left, the same paraffin-embedded Human liver cancer tissue is first treated with the fusion protein and then with 216960(Anti-AGO2 Antibody) at dilution 1/55.