

AGR2 RABBIT PAB

Cat.#: S216238

Product Name: Anti-AGR2 Rabbit Polyclonal Antibody

Synonyms: AG2, GOB-4, HAG-2, XAG-2, PDIA17

UNIPROT ID: O95994 (Gene Accession - BC015503)

Background: Anterior gradient protein 2 homolog (AGR2) is a human protein originally discovered in *Xenopus laevis*, encoded for by the gene of the same name. In *Xenopus* AGR2 is an important role in cement gland differentiation, however in human cancer cell lines high levels of AGR2 correlate with reduction of the p53 response and AGR2 levels are elevated in the preneoplastic tissue Barrett's oesophagus.

Immunogen: Fusion protein of human AGR2

Applications: ELISA, WB, IHC

Recommended Dilutions: IHC: Oct-50;WB: 1000-5000;ELISA: 1000-10000

Host Species: Rabbit

Clonality: Rabbit Polyclonal

Isotype: Immunogen-specific rabbit IgG

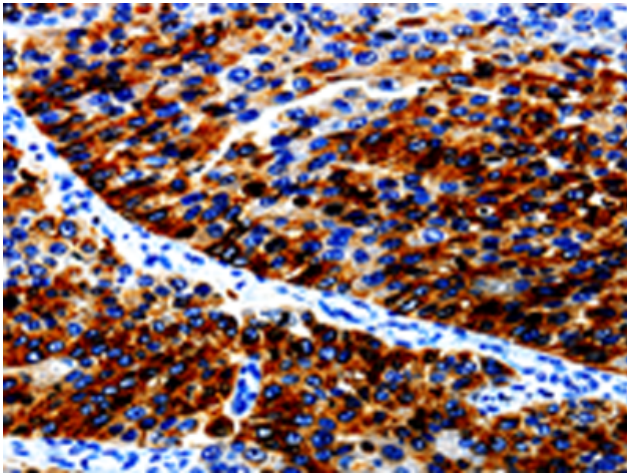
Purification: Antigen affinity purification

Species Reactivity: Human, Mouse

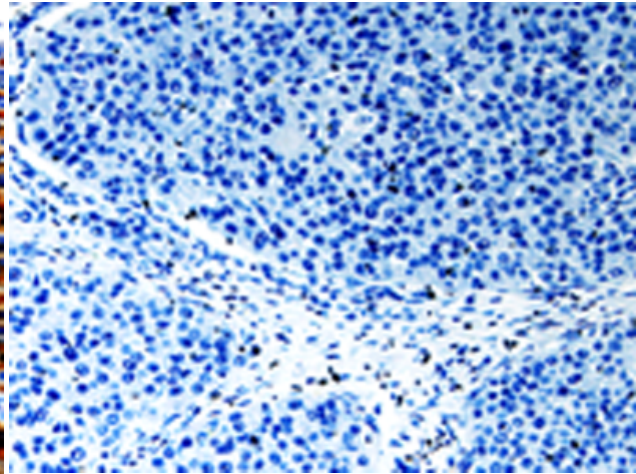
Constituents: PBS (without Mg²⁺ and Ca²⁺), pH 7.4, 150 mM NaCl, 0.05% Sodium Azide and 40% glycerol

Research Areas: Signal Transduction, Cancer

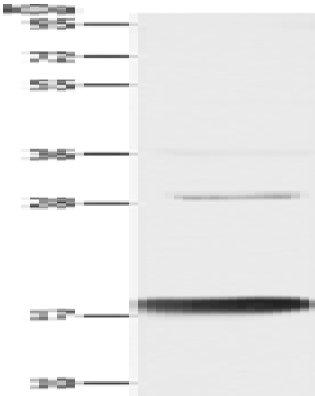
Storage & Shipping: Store at -20°C. Avoid repeated freezing and thawing



Immunohistochemistry analysis of paraffin embedded Human renal cancer tissue using 216238(AGR2 Antibody) at a dilution of 1/10(Cytoplasm).



In comparison with the IHC on the left, the same paraffin-embedded Human renal cancer tissue is first treated with the fusion protein and then with 216238(Anti-AGR2 Antibody) at dilution 1/10.



Gel: 10%SDS-PAGE, Lysate: 40 µg;
Lane: Mouse Large intestine tissue;
Primary antibody: 216238(AGR2 Antibody) at dilution 1/1000;
Secondary antibody: Goat anti rabbit IgG at 1/8000 dilution;
Exposure time: 20 seconds