

## AGTRAP RABBIT PAB

**Cat.#:** S216962

**Product Name:** Anti-AGTRAP Rabbit Polyclonal Antibody

**Synonyms:** ATRAP

**UNIPROT ID:** Q6RW13 (Gene Accession - BC017328 )

**Background:** This gene encodes a transmembrane protein localized to the plasma membrane and perinuclear vesicular structures. The gene product interacts with the angiotensin II type I receptor and negatively regulates angiotensin II signaling. Alternative splicing of this gene generates multiple transcript variants encoding different isoforms.

**Immunogen:** Fusion protein of human AGTRAP

**Applications:** ELISA, IHC

**Recommended Dilutions:** IHC: 50–200; ELISA: 2000–5000

**Host Species:** Rabbit

**Clonality:** Rabbit Polyclonal

**Isotype:** Immunogen-specific rabbit IgG

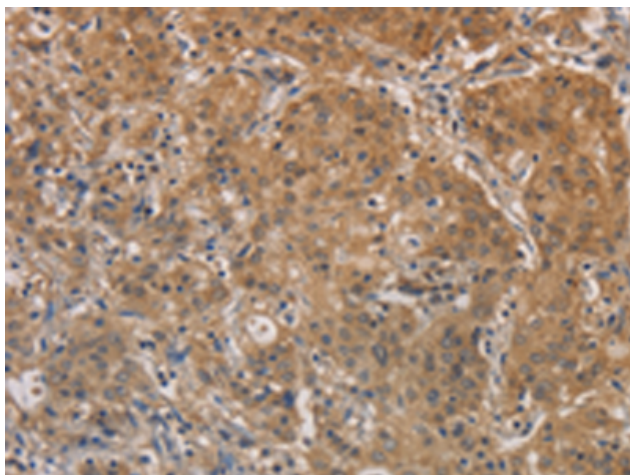
**Purification:** Antigen affinity purification

**Species Reactivity:** Human

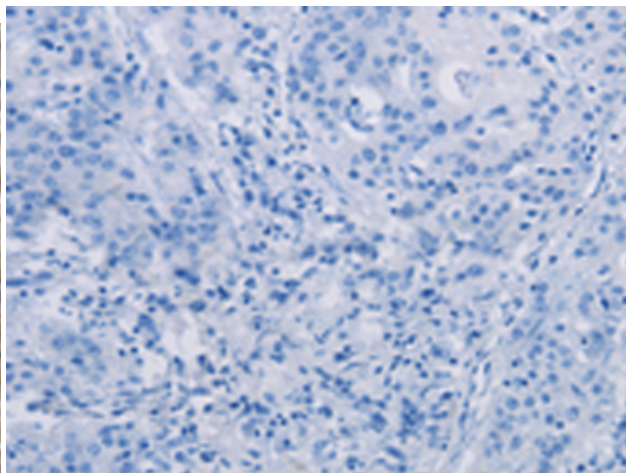
**Constituents:** PBS (without  $Mg^{2+}$  and  $Ca^{2+}$ ), pH 7.4, 150 mM NaCl, 0.05% Sodium Azide and 40% glycerol

**Research Areas:** Signal Transduction, Cardiovascular

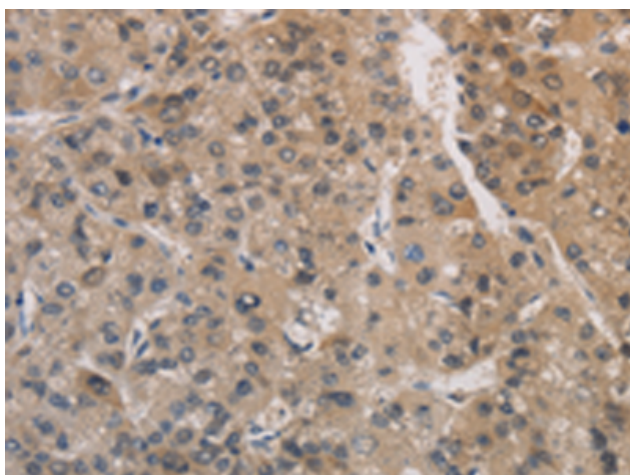
**Storage & Shipping:** Store at  $-20^{\circ}C$ . Avoid repeated freezing and thawing



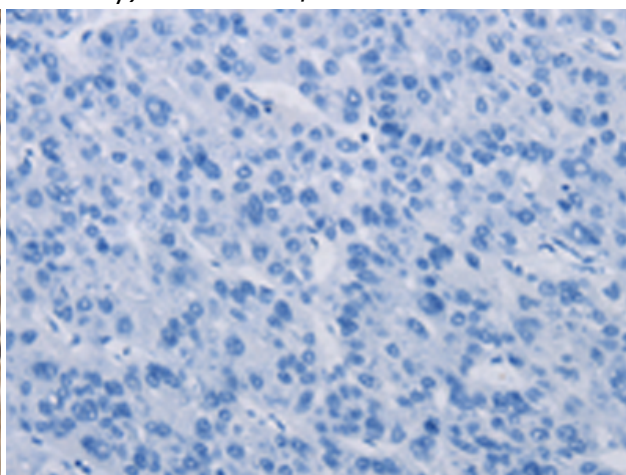
Immunohistochemistry analysis of paraffin embedded Human gastric cancer tissue using 216962(AGTRAP Antibody) at a dilution of 1/20(Cytoplasm).



In comparison with the IHC on the left, the same paraffin-embedded Human gastric cancer tissue is first treated with the fusion protein and then with 216962(Anti-AGTRAP Antibody) at dilution 1/20.



The image on the left is immunohistochemistry of paraffin-embedded Human liver cancer tissue using 216962(Anti-AGTRAP Antibody) at a dilution of 1/20.



In comparison with the IHC on the left, the same paraffin-embedded Human liver cancer tissue is first treated with fusion protein and then with D221548(Anti-AGTRAP Antibody) at dilution 1/20.