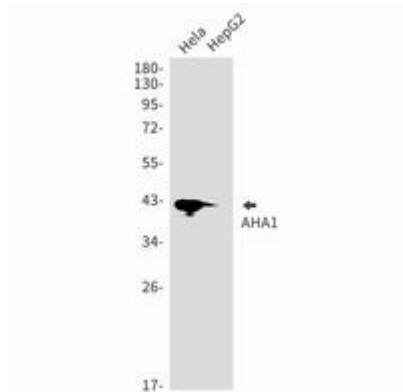
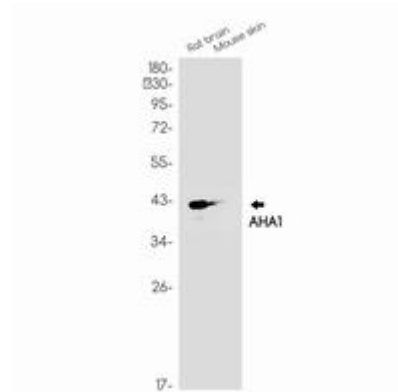


**AHA1 RABBIT MAB****Cat.#:** N261809**Product Name:** Anti-AHA1 Rabbit Monoclonal Antibody**Synonyms:** AHSA1; C14orf3; HSPC322; Activator of 90 kDa heat shock protein ATPase homolog 1; AHA1; p38**UNIPROT ID:** O95433**Background:** Cochaperone that stimulates HSP90 ATPase activity (By similarity). May affect a step in the endoplasmic reticulum to Golgi trafficking.**Immunogen:** A synthetic peptide of human AHA1**Applications:** WB,IP**Recommended Dilutions:** WB: 1/500-1/1000 IP: 1/20**Host Species:** Rabbit**Clonality:** Rabbit Monoclonal**Clone ID:** R01-8D9**MW:** Calculated MW: 38 kDa; Observed MW: 42 kDa**Isotype:** IgG**Purification:** Affinity Purified**Species Reactivity:** Human,Mouse,Rat**Conjugation:** Unconjugated**Modification:** Unmodified**Constituents:** PBS (without Mg<sup>2+</sup> and Ca<sup>2+</sup>), pH 7.3 containing 50% glycerol, 0.5% BSA and 0.02% sodium azide**Research Areas:** Signal Transduction**Storage & Shipping:** Store at -20°C. Avoid repeated freezing and thawing



Western blot analysis of AHA1 in HeLa, HepG2 lysates using AHA1 antibody.



Western blot analysis of AHA1 in rat brain, mouse skin lysates using AHA1 antibody.