

## AK1 RABBIT PAB

**Cat.#:** S210115

**Product Name:** Anti-AK1 Rabbit Polyclonal Antibody

**Synonyms:** HTL-S-58j

**UNIPROT ID:** P00568 (Gene Accession - BC001116 )

**Background:** Adenylate kinase is an enzyme involved in regulating the adenine nucleotide composition within a cell by catalyzing the reversible transfer of phosphate group among adinine nucleotides. Three isozymes of adenylate kinase have been identified in vertebrates, adenylate isozyme 1 (AK1), 2 (AK2) and 3 (AK3). AK1 is found in the cytosol of skeletal muscle, brain and erythrocytes, whereas AK2 and AK3 are found in the mitochondria of other tissues including liver and heart. AK1 was identified because of its association with a rare genetic disorder causing nonspherocytic hemolytic anemia where a mutation in the AK1 gene was found to reduce the catalytic activity of the enzyme.

**Immunogen:** Fusion protein of human AK1

**Applications:** ELISA, WB, IHC

**Recommended Dilutions:** IHC: 25-100;WB: 500-1000;ELISA: 2000-5000

**Host Species:** Rabbit

**Clonality:** Rabbit Polyclonal

**Isotype:** Immunogen-specific rabbit IgG

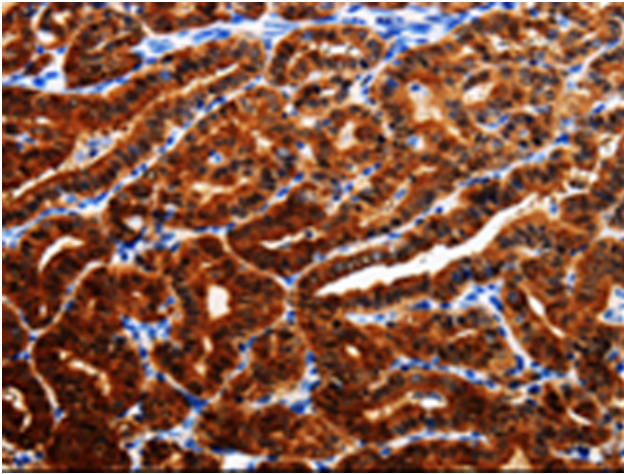
**Purification:** Antigen affinity purification

**Species Reactivity:** Human, Mouse, Rat

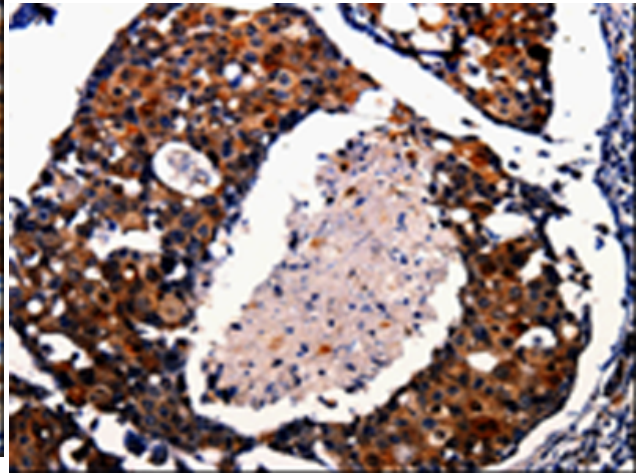
**Constituents:** PBS (without Mg<sup>2+</sup> and Ca<sup>2+</sup>), pH 7.4, 150 mM NaCl, 0.05% Sodium Azide and 40% glycerol

**Research Areas:** Metabolism, Cardiovascular

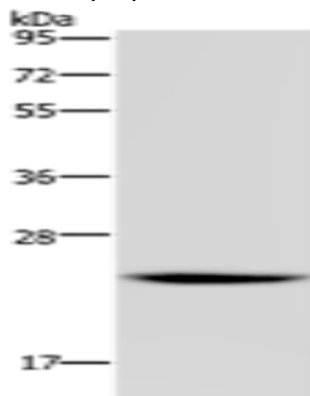
**Storage & Shipping:** Store at -20°C. Avoid repeated freezing and thawing



Immunohistochemistry analysis of paraffin-embedded Human thyroid cancer tissue using 210115(AK1 Antibody) at a dilution of 1/25(Cytoplasm).



Immunohistochemistry analysis of paraffin-embedded Human breast cancer tissue using 210115(Anti-AK1 Antibody) at a dilution of 1/25.



Gel: 10%SDS-PAGE, Lysate: 30  $\mu$ g;  
Lane: HT29 cells;  
Primary antibody: 210115(AK1 Antibody) at dilution 1/400;  
Secondary antibody: Goat anti rabbit IgG at 1/8000 dilution;  
Exposure time: 2min