

## AKAP17A RABBIT PAB

**Cat.#:** S212822

**Product Name:** Anti-AKAP17A Rabbit Polyclonal Antibody

**Synonyms:** XE7; 721P; XE7Y; CCDC133; CXYorf3; PRKA17A; SFRS17A; AKAP-17A; DXYS155E

**UNIPROT ID:** Q02040 (Gene Accession - BC028151)

**Background:** This locus encodes a protein kinase A anchoring protein. The encoded protein is part of the spliceosome complex and is involved in the regulation of alternate splicing in some mRNA precursors. Alternatively spliced transcript variants have been identified for this gene.

**Immunogen:** Fusion protein of human AKAP17A

**Applications:** ELISA, IHC

**Recommended Dilutions:** IHC: 40-200; ELISA: 5000-10000

**Host Species:** Rabbit

**Clonality:** Rabbit Polyclonal

**Isotype:** Immunogen-specific rabbit IgG

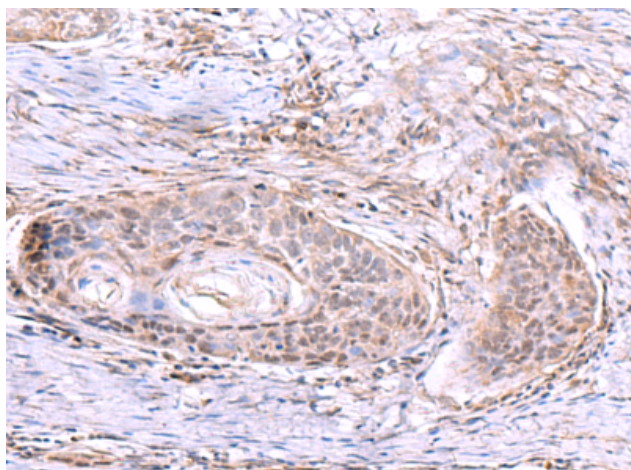
**Purification:** Antigen affinity purification

**Species Reactivity:** Human

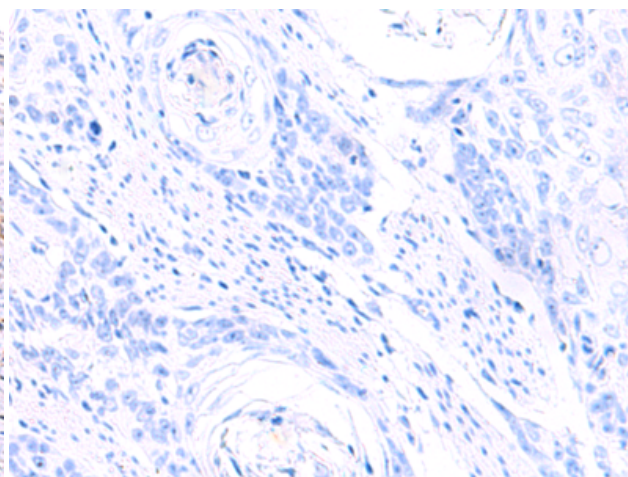
**Constituents:** PBS (without Mg<sup>2+</sup> and Ca<sup>2+</sup>), pH 7.4, 150 mM NaCl, 0.05% Sodium Azide and 40% glycerol

**Research Areas:** Epigenetics and Nuclear Signaling

**Storage & Shipping:** Store at -20°C. Avoid repeated freezing and thawing



Immunohistochemistry analysis of paraffin embedded Human esophagus cancer tissue using 212822(AKAP17A Antibody) at a dilution of 1/80(Nucleus).



In comparison with the IHC on the left, the same paraffin-embedded Human esophagus cancer tissue is first treated with the fusion protein and then with 212822(Anti-AKAP17A Antibody) at dilution 1/80.