

## AKAP4 RABBIT PAB

**Cat.#:** S216965

**Product Name:** Anti-AKAP4 Rabbit Polyclonal Antibody

**Synonyms:** HI; p82; CT99; FSC1; PRKA4; AKAP-4; AKAP82; AKAP 82; hAKAP82

**UNIPROT ID:** Q5JQC9 (Gene Accession - BC126250 )

**Background:** The A-kinase anchor proteins (AKAPs) are a group of structurally diverse proteins, which have the common function of binding to the regulatory subunit of protein kinase A (PKA) and confining the holoenzyme to discrete locations within the cell. This gene encodes a member of the AKAP family. The encoded protein is localized to the sperm flagellum and may be involved in the regulation of sperm motility. Alternative splicing of this gene results in two transcript variants encoding different isoforms.

**Immunogen:** Fusion protein of human AKAP4

**Applications:** ELISA, IHC

**Recommended Dilutions:** IHC: 25-100; ELISA: 2000-5000

**Host Species:** Rabbit

**Clonality:** Rabbit Polyclonal

**Isotype:** Immunogen-specific rabbit IgG

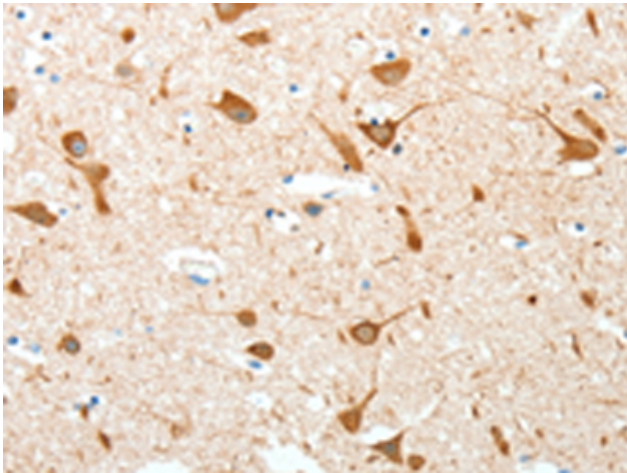
**Purification:** Antigen affinity purification

**Species Reactivity:** Human

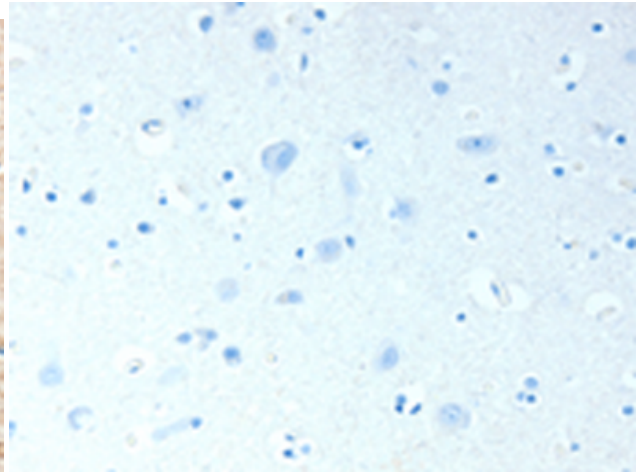
**Constituents:** PBS (without Mg<sup>2+</sup> and Ca<sup>2+</sup>), pH 7.4, 150 mM NaCl, 0.05% Sodium Azide and 40% glycerol

**Research Areas:** Signal Transduction

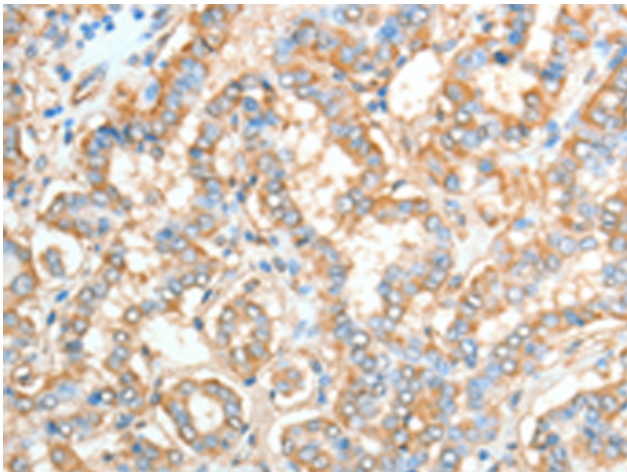
**Storage & Shipping:** Store at -20°C. Avoid repeated freezing and thawing



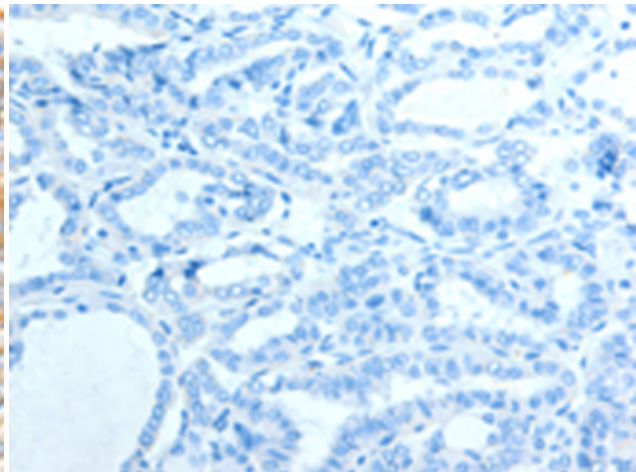
Immunohistochemistry analysis of paraffin embedded Human brain tissue using 216965(AKAP4 Antibody) at a dilution of 1/10(Cytoplasm).



In comparison with the IHC on the left, the same paraffin-embedded Human brain tissue is first treated with the fusion protein and then with 216965(Anti-AKAP4 Antibody) at dilution 1/10.



The image on the left is immunohistochemistry of paraffin-embedded Human thyroid cancer tissue using 216965(Anti-AKAP4 Antibody) at a dilution of 1/10.



In comparison with the IHC on the left, the same paraffin-embedded Human thyroid cancer tissue is first treated with fusion protein and then with D221557(Anti-AKAP4 Antibody) at dilution 1/10.