

AKAP95 RABBIT MAB

Cat.#: N263214

Product Name: Anti-AKAP95 Rabbit Monoclonal Antibody

Synonyms: AKAP8; AKAP95; A-kinase anchor protein 8; AKAP-8; A-kinase anchor protein 95 kDa; AKAP 95

UNIPROT ID: O43823

Background: Anchoring protein that mediates the subcellular compartmentation of cAMP-dependent protein kinase (PKA type II).

Immunogen: A synthetic peptide of human AKAP 95

Applications: WB,IHC-F,IHC-P,ICC/IF

Recommended Dilutions: WB: 1/500-1/1000 IHC: 1/50-1/100 IF: 1/50-1/200

Host Species: Rabbit

Clonality: Rabbit Monoclonal

Clone ID: R05-7H8

MW: Calculated MW: 76 kDa; Observed MW: 95 kDa

Isotype: IgG

Purification: Affinity Purified

Species Reactivity: Human,Mouse,Rat

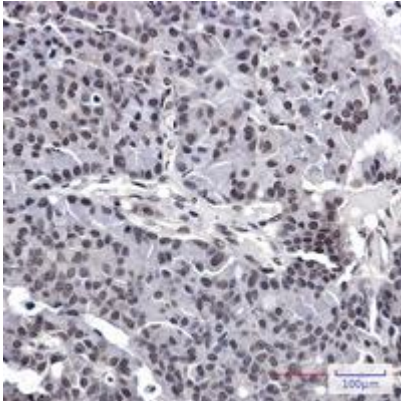
Conjugation: Unconjugated

Modification: Unmodified

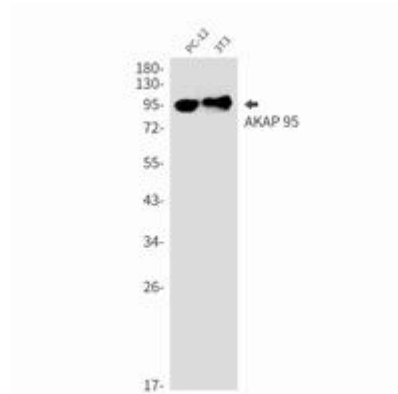
Constituents: PBS (without Mg²⁺ and Ca²⁺), pH 7.3 containing 50% glycerol, 0.5% BSA and 0.02% sodium azide

Research Areas: Epigenetics and Nuclear Signaling

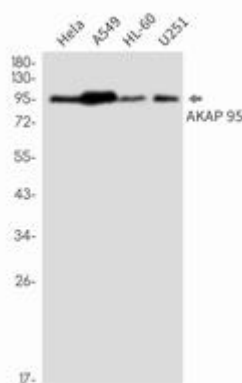
Storage & Shipping: Store at -20°C. Avoid repeated freezing and thawing



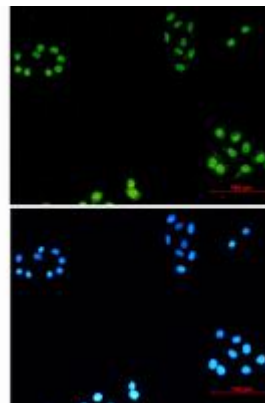
Immunohistochemistry analysis of paraffin-embedded Human breast cancer using AKAP 95 antibody. High-pressure and temperature Sodium Citrate pH 6.0 was used for antigen retrieval.



Western blot analysis of AKAP 95 in PC-12, 3T3 lysates using AKAP95 antibody.



Western blot analysis of AKAP 95 in HeLa, A549, HL-60, U251 lysates using AKAP 95 antibody.



Immunocytochemistry analysis of AKAP 95 (green) in HeLa using AKAP 95 antibody, and DAPI (blue).