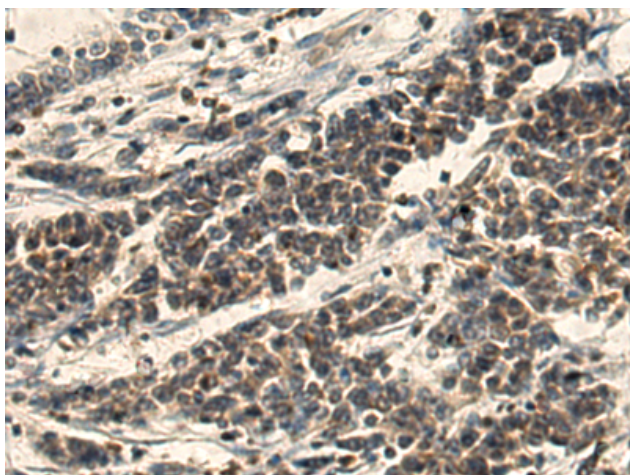
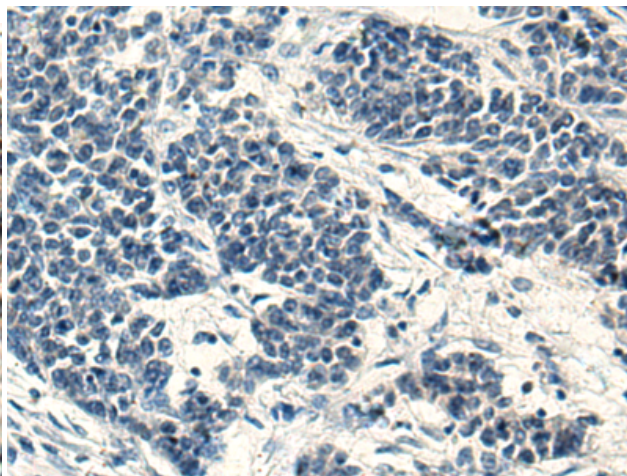


AKT1S1 RABBIT PAB**Cat.#:** S211444**Product Name:** Anti-AKT1S1 Rabbit Polyclonal Antibody**Synonyms:** Lobe; PRAS40**UNIPROT ID:** Q96B36 (Gene Accession - BC015562)**Background:** AKT1S1 is a proline-rich substrate of AKT (MIM 164730) that binds 14-3-3 protein (see YWHAH, MIM 113508) when phosphorylated (Kovacina et al., 2003 [PubMed 12524439]).**Immunogen:** Fusion protein of human AKT1S1**Applications:** ELISA, IHC**Recommended Dilutions:** IHC: 150-300; ELISA: 5000-10000**Host Species:** Rabbit**Clonality:** Rabbit Polyclonal**Isotype:** Immunogen-specific rabbit IgG**Purification:** Antigen affinity purification**Species Reactivity:** Human, Mouse**Constituents:** PBS (without Mg²⁺ and Ca²⁺), pH 7.4, 150 mM NaCl, 0.05% Sodium Azide and 40% glycerol**Research Areas:** Signal Transduction, Cancer, Neuroscience**Storage & Shipping:** Store at -20°C. Avoid repeated freezing and thawing

Immunohistochemistry analysis of paraffin embedded Human colorectal cancer tissue using 211444(AKT1S1 Antibody) at a dilution of 1/150(Cytoplasm).



In comparison with the IHC on the left, the same paraffin-embedded Human colorectal cancer tissue is first treated with the fusion protein and then with 211444(Anti-AKT1S1 Antibody) at dilution 1/150.