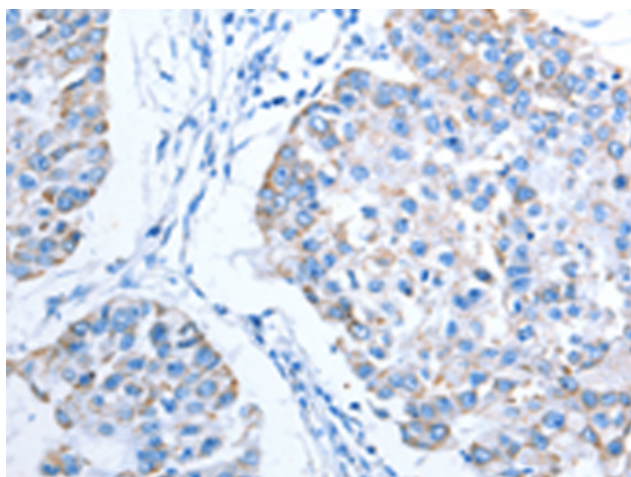
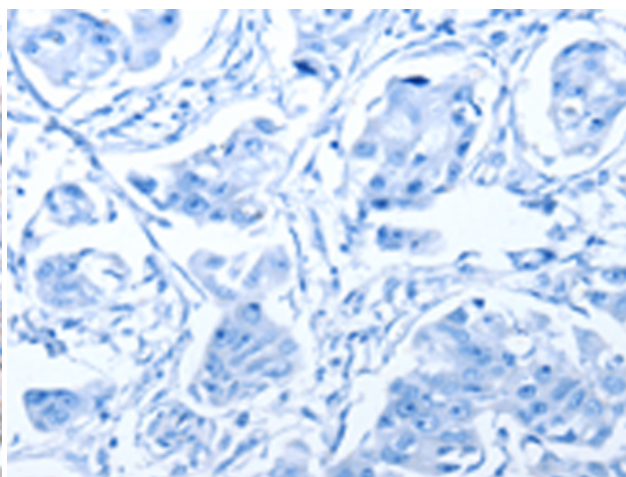


ALAS1 RABBIT PAB**Cat.#:** S216968**Product Name:** Anti-ALAS1 Rabbit Polyclonal Antibody**Synonyms:** ALAS; MIG4; ALAS3; ALASH**UNIPROT ID:** P13196 (Gene Accession - BC011798)

Background: This gene encodes the mitochondrial enzyme which catalyzes the rate-limiting step in heme (iron-protoporphyrin) biosynthesis. The enzyme encoded by this gene is the housekeeping enzyme; a separate gene encodes a form of the enzyme that is specific for erythroid tissue. The level of the mature encoded protein is regulated by heme: high levels of heme down-regulate the mature enzyme in mitochondria while low heme levels up-regulate. A pseudogene of this gene is located on chromosome 12. Multiple alternatively spliced variants, encoding the same protein, have been identified.

Immunogen: Fusion protein of human ALAS1**Applications:** ELISA, IHC**Recommended Dilutions:** IHC: 15-50; ELISA: 1000-2000**Host Species:** Rabbit**Clonality:** Rabbit Polyclonal**Isotype:** Immunogen-specific rabbit IgG**Purification:** Antigen affinity purification**Species Reactivity:** Human, Mouse, Rat**Constituents:** PBS (without Mg²⁺ and Ca²⁺), pH 7.4, 150 mM NaCl, 0.05% Sodium Azide and 40% glycerol**Research Areas:** Metabolism, Cardiovascular**Storage & Shipping:** Store at -20°C. Avoid repeated freezing and thawing

Immunohistochemistry analysis of paraffin embedded Human breast cancer tissue using 216968(ALAS1 Antibody) at a dilution of 1/15(Cytoplasm).



In comparison with the IHC on the left, the same paraffin-embedded Human breast cancer tissue is first treated with the fusion protein and then with 216968(Anti-ALAS1 Antibody) at dilution 1/15.