

ALAS2 RABBIT MAB

Cat.#: N261812

Product Name: Anti-ALAS2 Rabbit Monoclonal Antibody

Synonyms: ASB; ANH1; XLSA; ALASE; XLDPP; XLEPP; ALAS-E; SIDBA1

UNIPROT ID: P22557

Background: Miscellaneous There are two delta-ALA synthases in vertebrates: an erythroid- specific form and one (housekeeping) which is expressed in all tissues.

Immunogen: A synthetic peptide of human ALAS2

Applications: WB,IP

Recommended Dilutions: WB: 1/500-1/1000 IP: 1/20

Host Species: Rabbit

Clonality: Rabbit Monoclonal

Clone ID: R06-3A3

MW: Calculated MW: 65 kDa; Observed MW: 65 kDa

Isotype: IgG

Purification: Affinity Purified

Species Reactivity: Human,Mouse,Rat

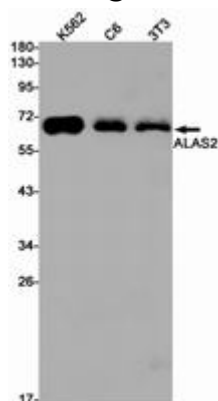
Conjugation: Unconjugated

Modification: Unmodified

Constituents: PBS (without Mg²⁺ and Ca²⁺), pH 7.3 containing 50% glycerol, 0.5% BSA and 0.02% sodium azide

Research Areas: Cardiovascular

Storage & Shipping: Store at -20°C. Avoid repeated freezing and thawing



Western blot analysis of ALAS2 in K562, C6, 3T3 lysates using ALAS2 antibody.



Product Description

Pioneering GTPase and Oncogene Product Development since 2010
