

ALDH1A1 RABBIT PAB

Cat.#: N225568

Product Name: Anti-ALDH1A1 Rabbit pAb

Synonyms: ALDH1A1; ALDC; ALDH1; PUMBI; Retinal dehydrogenase 1; RALDH 1; RalDH1; ALDH-E1; ALHDII; Aldehyde dehydrogenase family 1 member A1; Aldehyde dehydrogenase; cytosolic

UNIPROT ID: P00352

Background: ALDH1A1 is a liver cytosolic isoform of acetaldehyde dehydrogenase and is involved in the major pathway of alcohol metabolism along with alcohol dehydrogenase. ALDH1A1 is also known as retinal dehydrogenase 1 and is involved in retinol metabolism, converting retinol to retinoic acid.

Immunogen: A synthesized peptide derived from human ALDH1A1

Applications: WB,IHC-P,ICC/IF,FC,IP

Recommended Dilutions: WB: 1/500-1/1000 IHC: 1/50-1/100 IF: 1/50-1/200 IP: 1/20 FC: 1/50-1/100

Host Species: Rabbit

Clonality: Rabbit Polyclonal

Clone ID: -

MW: Calculated MW: 55 kDa; Observed MW: 55 kDa

Isotype: IgG

Purification: Affinity Chromatography

Species Reactivity: Human,Mouse,Rat

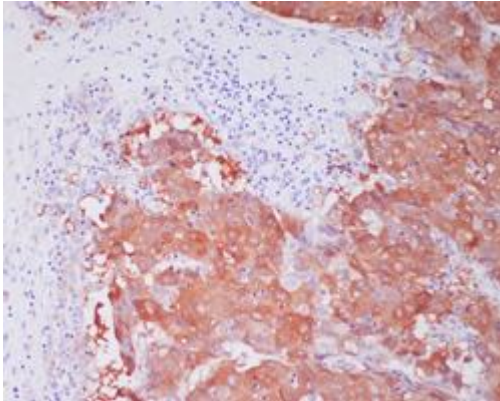
Conjugation: Unconjugated

Modification: Unmodified

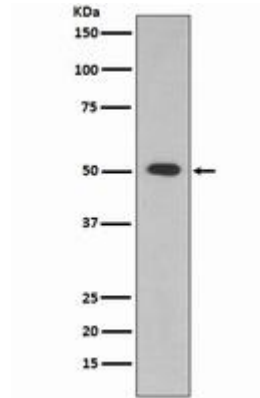
Constituents: PBS (without Mg²⁺ and Ca²⁺), pH 7.3 containing 50% glycerol, 0.5% BSA and 0.02% sodium azide

Research Areas: Neuroscience Dopaminergic Neurons

Storage & Shipping: Store at -20°C. Avoid repeated freezing and thawing



Immunohistochemistry analysis of paraffin-embedded Human liver cancer using ALDH1A1 antibody. High-pressure and temperature Sodium Citrate pH 6.0 was used for antigen retrieval.



Western blot analysis of ALDH1A1 in HepG2 lysates using ALDH1A1 antibody.