

ALDH3A2 RABBIT PAB

Cat.#: S217982

Product Name: Anti-ALDH3A2 Rabbit Polyclonal Antibody

Synonyms: SLS; FALDH; ALDH10

UNIPROT ID: P51648 (Gene Accession - BC002430)

Background: Aldehyde dehydrogenase isozymes are thought to play a major role in the detoxification of aldehydes generated by alcohol metabolism and lipid peroxidation. This gene product catalyzes the oxidation of long-chain aliphatic aldehydes to fatty acid. Mutations in the gene cause Sjogren-Larsson syndrome. Alternatively spliced transcript variants encoding different isoforms have been found for this gene.

Immunogen: Fusion protein of human ALDH3A2

Applications: ELISA, WB, IHC

Recommended Dilutions: IHC: 50-200;WB: 1000-5000;ELISA: 5000-10000

Host Species: Rabbit

Clonality: Rabbit Polyclonal

Isotype: Immunogen-specific rabbit IgG

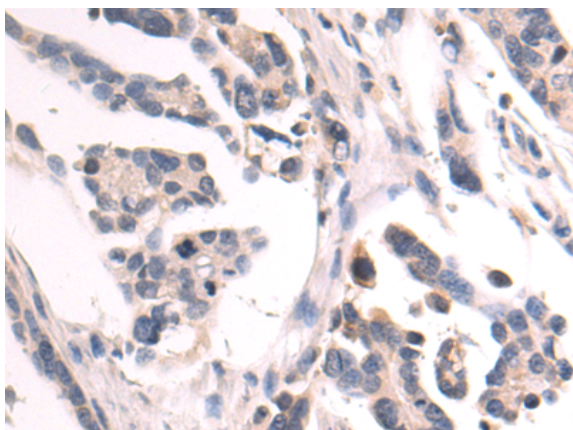
Purification: Antigen affinity purification

Species Reactivity: Human, Rat

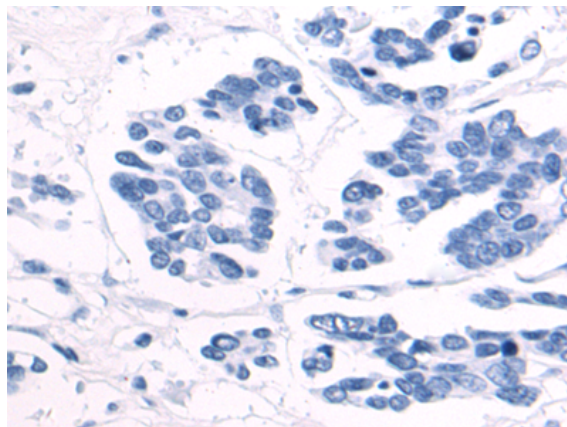
Constituents: PBS (without Mg²⁺ and Ca²⁺), pH 7.4, 150 mM NaCl, 0.05% Sodium Azide and 40% glycerol

Research Areas: Metabolism

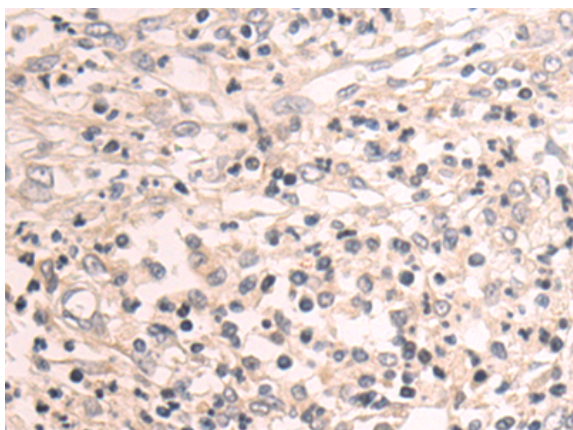
Storage & Shipping: Store at -20°C. Avoid repeated freezing and thawing



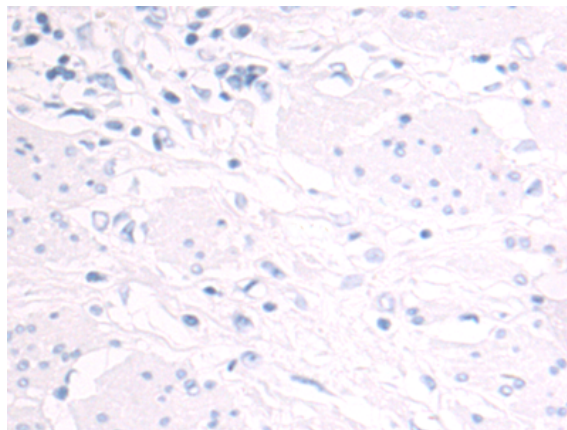
Immunohistochemistry analysis of paraffin embedded Human colorectal cancer tissue using 217982(ALDH3A2 Antibody) at a dilution of 1/70(Cytoplasm).



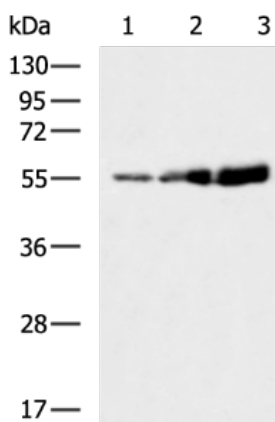
In comparison with the IHC on the left, the same paraffin-embedded Human colorectal cancer tissue is first treated with the fusion protein and then with 217982(Anti-ALDH3A2 Antibody) at dilution 1/70.



The image on the left is immunohistochemistry of paraffin-embedded Human esophagus cancer tissue using 217982(Anti-ALDH3A2 Antibody) at a dilution of 1/70.



In comparison with the IHC on the left, the same paraffin-embedded Human esophagus cancer tissue is first treated with fusion protein and then with D223491(Anti-ALDH3A2 Antibody) at dilution 1/70.



Gel: 8%SDS-PAGE, Lysate: 40 μ g;
 Lane 1-3: Rat liver tissue, HepG2 cell, A549 cell lysates;
 Primary antibody: 217982(ALDH3A2 Antibody) at dilution 1/1000;
 Secondary antibody: HRP-conjugated Goat anti rabbit IgG at 1/5000 dilution;
 Exposure time: 10 seconds



Product Description

Pioneering GTPase and Oncogene Product Development since 2010
