

ALDH7A1 RABBIT MAB

Cat.#: N261815

Product Name: Anti-ALDH7A1 Rabbit Monoclonal Antibody

Synonyms: aldehyde dehydrogenase 7 family member A1; EPD; PDE; ATQ1

UNIPROT ID: P49419

Background: Multifunctional enzyme mediating important protective effects. Metabolizes betaine aldehyde to betaine, an important cellular osmolyte and methyl donor. Protects cells from oxidative stress by metabolizing a number of lipid peroxidation-derived aldehydes. Involved in lysine catabolism.

Immunogen: A synthetic peptide of human ALDH7A1

Applications: WB, ICC/IF, IP

Recommended Dilutions: WB: 1/500-1/1000 IF: 1/50-1/200 IP: 1/20

Host Species: Rabbit

Clonality: Rabbit Monoclonal

Clone ID: R01-9D6

MW: Calculated MW: 58 kDa; Observed MW: 58 kDa

Isotype: IgG

Purification: Affinity Purified

Species Reactivity: Human, Mouse

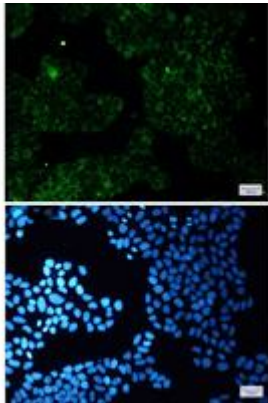
Conjugation: Unconjugated

Modification: Unmodified

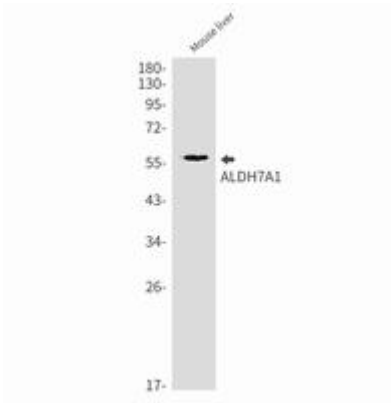
Constituents: PBS (without Mg²⁺ and Ca²⁺), pH 7.3 containing 50% glycerol, 0.5% BSA and 0.02% sodium azide

Research Areas: Signal Transduction

Storage & Shipping: Store at -20°C. Avoid repeated freezing and thawing



Immunocytochemistry analysis of ALDH7A1 (green) in HeLa using ALDH7A1 antibody, and DAPI (blue)



Western blot analysis of ALDH7A1 in mouse liver lysates using ALDH7A1 antibody.



Western blot analysis of ALDH7A1 in HeLa lysates using ALDH7A1 antibody.