

## ALDH7A1 RABBIT PAB

**Cat.#:** S221779

**Product Name:** Anti-ALDH7A1 Rabbit Polyclonal Antibody

**Synonyms:** EPD; PDE; ATQ1

**UNIPROT ID:** P49419 (Gene Accession - NP\_001173 )

**Background:** The protein encoded by this gene is a member of subfamily 7 in the aldehyde dehydrogenase gene family. These enzymes are thought to play a major role in the detoxification of aldehydes generated by alcohol metabolism and lipid peroxidation. This particular member has homology to a previously described protein from the green garden pea, the 26g pea turgor protein. It is also involved in lysine catabolism that is known to occur in the mitochondrial matrix. Recent reports show that this protein is found both in the cytosol and the mitochondria, and the two forms likely arise from the use of alternative translation initiation sites. An additional variant encoding a different isoform has also been found for this gene. Mutations in this gene are associated with pyridoxine-dependent epilepsy. Several related pseudogenes have also been identified.

**Immunogen:** Synthetic peptide of human ALDH7A1

**Applications:** ELISA, WB, IHC

**Recommended Dilutions:** IHC: 20-100;WB: 200-1000;ELISA: 5000-10000

**Host Species:** Rabbit

**Clonality:** Rabbit Polyclonal

**Isotype:** Immunogen-specific rabbit IgG

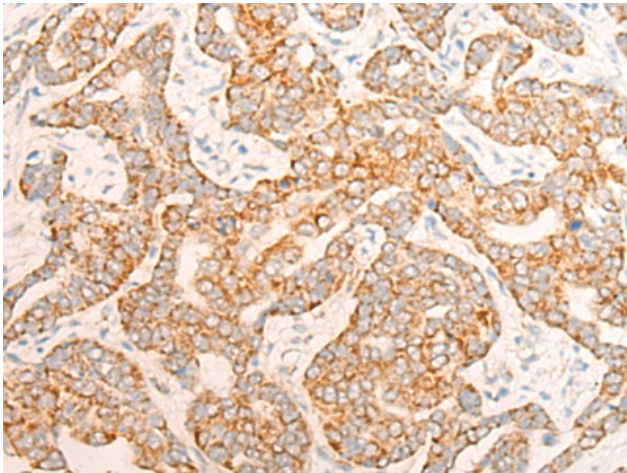
**Purification:** Antigen affinity purification

**Species Reactivity:** Human, Mouse, Rat

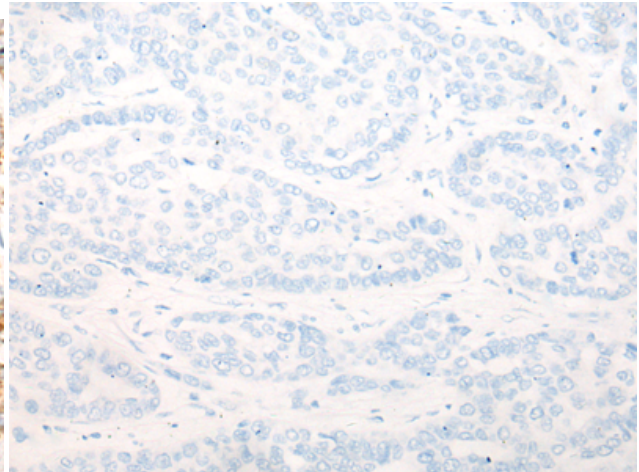
**Constituents:** PBS (without Mg<sup>2+</sup> and Ca<sup>2+</sup>), pH 7.4, 150 mM NaCl, 0.05% Sodium Azide and 40% glycerol

**Research Areas:** Metabolism

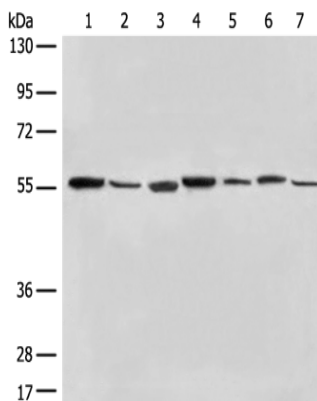
**Storage & Shipping:** Store at -20°C. Avoid repeated freezing and thawing



Immunohistochemistry analysis of paraffin embedded Human liver cancer tissue using 221779 (ALDH7A1 Antibody) at a dilution of 1/20 (Cytoplasm).



In comparison with the IHC on the left, the same paraffin-embedded Human liver cancer tissue is first treated with the synthetic peptide and then with 221779 (Anti-ALDH7A1 Antibody) at dilution 1/20.



Gel: 8% SDS-PAGE, Lysate: 40 µg;  
Lane 1-7: Rat liver tissue, A172 and HepG2 cell,  
Mouse liver tissue, Hela cell, Human liver  
tissue and Human fetal liver tissue lysates;  
Primary antibody: 221779 (ALDH7A1 Antibody)  
at dilution 1/250;  
Secondary antibody: Goat anti rabbit IgG at  
1/8000 dilution;  
Exposure time: 5 seconds