

## ALG9 RABBIT PAB

**Cat.#:** S216977

**Product Name:** Anti-ALG9 Rabbit Polyclonal Antibody

**Synonyms:** CDG1L; DIBD1; LOH11CR1J

**UNIPROT ID:** Q9H6U8 (Gene Accession - BC009255 )

**Background:** This gene encodes an alpha-1,2-mannosyltransferase enzyme that functions in lipid-linked oligosaccharide assembly. Mutations in this gene result in congenital disorder of glycosylation type II. Multiple transcript variants encoding different isoforms have been found for this gene.

**Immunogen:** Fusion protein of human ALG9

**Applications:** ELISA, IHC

**Recommended Dilutions:** IHC: 50-200; ELISA: 2000-5000

**Host Species:** Rabbit

**Clonality:** Rabbit Polyclonal

**Isotype:** Immunogen-specific rabbit IgG

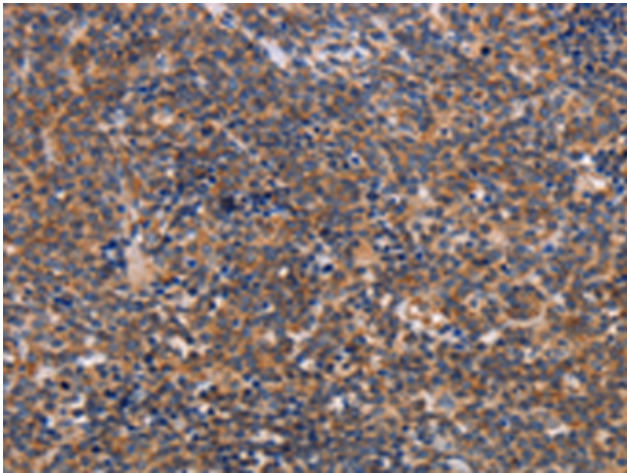
**Purification:** Antigen affinity purification

**Species Reactivity:** Human, Mouse

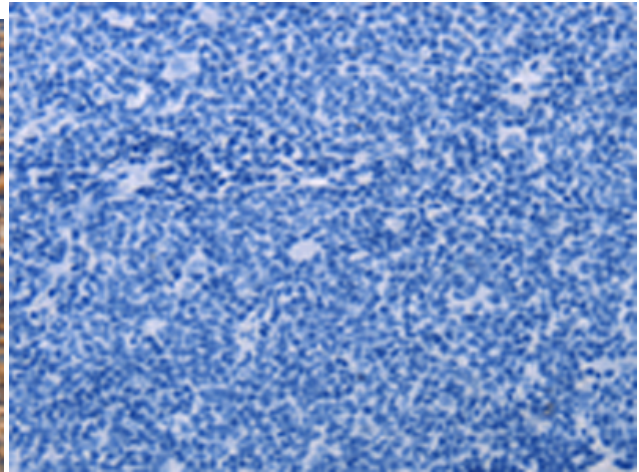
**Constituents:** PBS (without Mg<sup>2+</sup> and Ca<sup>2+</sup>), pH 7.4, 150 mM NaCl, 0.05% Sodium Azide and 40% glycerol

**Research Areas:** Cell Biology

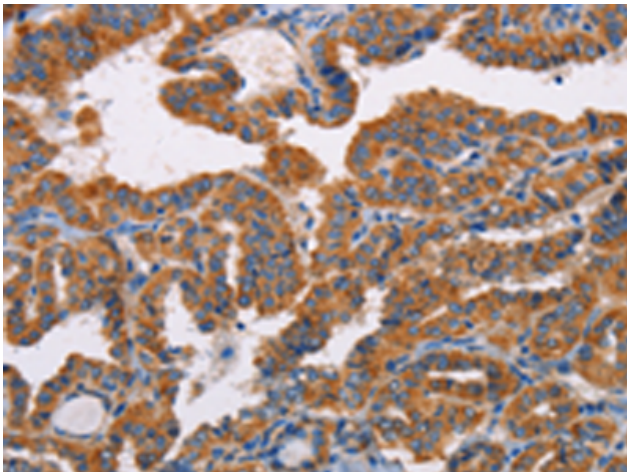
**Storage & Shipping:** Store at -20°C. Avoid repeated freezing and thawing



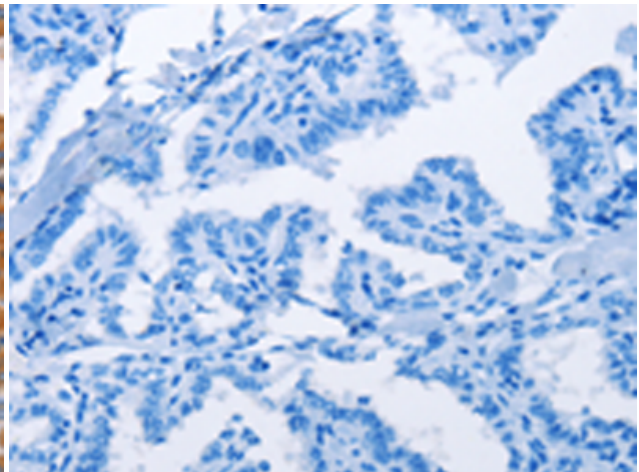
Immunohistochemistry analysis of paraffin embedded Human lymphoma tissue using 216977(ALG9 Antibody) at a dilution of 1/30(Cytoplasm).



In comparison with the IHC on the left, the same paraffin-embedded Human lymphoma tissue is first treated with the fusion protein and then with 216977(Anti-ALG9 Antibody) at dilution 1/30.



The image on the left is immunohistochemistry of paraffin-embedded Human thyroid cancer tissue using 216977(Anti-ALG9 Antibody) at a dilution of 1/30.



In comparison with the IHC on the left, the same paraffin-embedded Human thyroid cancer tissue is first treated with fusion protein and then with D221578(Anti-ALG9 Antibody) at dilution 1/30.