

ALKALINE PHOSPHATASE RABBIT PAB

Cat.#: N225614

Product Name: Anti-Alkaline Phosphatase Rabbit pAb

Synonyms: ALPL; Alkaline phosphatase; tissue-nonspecific isozyme; AP-TNAP; TNSALP; Alkaline phosphatase liver/bone/kidney isozyme

UNIPROT ID: P05186

Background: There are at least four distinct but related alkaline phosphatases: intestinal, placental, placental-like, and liver/bone/kidney (tissue non-specific). The first three are located together on chromosome 2, while the tissue non-specific form is located on chromosome 1. The product of this gene is a membrane bound glycosylated enzyme that is not expressed in any particular tissue and is, therefore, referred to as the tissue-nonspecific form of the enzyme.

Immunogen: A synthesized peptide derived from human Alkaline Phosphatase

Applications: WB,IHC-P,ICC/IF,IP,FC

Recommended Dilutions: WB: 1/500-1/1000 IHC: 1/50-1/100 IF: 1/50-1/200 IP: 1/20 FC: 1/50-1/100

Host Species: Rabbit

Clonality: Rabbit Polyclonal

Clone ID: -

MW: Calculated MW: 57 kDa; Observed MW: 75 kDa

Isotype: IgG

Purification: Affinity Chromatography

Species Reactivity: Human,Mouse,Rat

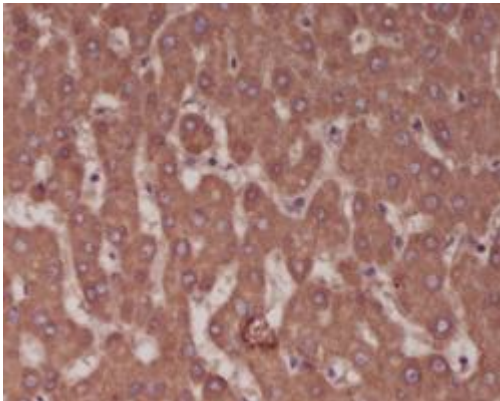
Conjugation: Unconjugated

Modification: Unmodified

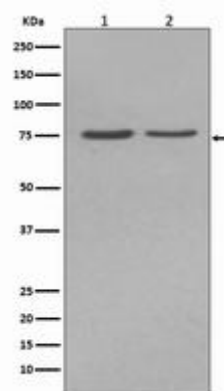
Constituents: PBS (without Mg²⁺ and Ca²⁺), pH 7.3 containing 50% glycerol, 0.5% BSA and 0.02% sodium azide

Research Areas: Tags & Cell Markers

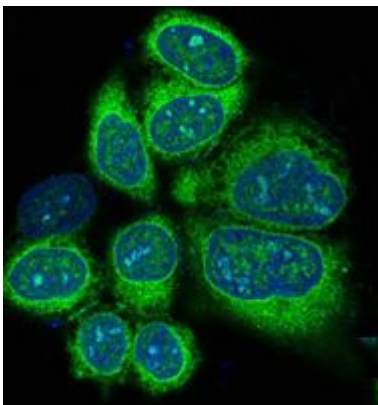
Storage & Shipping: Store at -20°C. Avoid repeated freezing and thawing



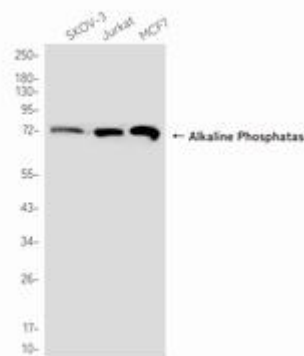
Immunohistochemistry analysis of paraffin-embedded Human liver using Alkaline Phosphatase antibody. High-pressure and temperature Sodium Citrate pH 6.0 was used for antigen retrieval.



Western blot analysis of Alkaline Phosphatase in (1) HepG2 lysates; (2) JAR lysates using Alkaline Phosphatase antibody.



Immunofluorescence analysis of Alkaline Phosphatase in HeLa using Alkaline Phosphatase antibody.



Western blot analysis of Alkaline Phosphatase in SKOV-3, Jurkat and MCF-7 lysates using Alkaline Phosphatase antibody.