

ALPHA 1-ANTITRYPSIN RABBIT MAB

Cat.#: N263215

Product Name: Anti-alpha 1-Antitrypsin Rabbit Monoclonal Antibody

Synonyms: SERPINA1; AAT; PI; Alpha-1-antitrypsin; Alpha-1 protease inhibitor; Alpha-1-antiproteinase; Serpin A1

UNIPROT ID: P01009

Background: SERPINA1 is secreted and is a serine protease inhibitor which its targets include elastase, plasmin, collagenase, thrombin, leucocytic proteases, trypsin, chymotrypsin, and plasminogen activator. Inhibitor of serine proteases. Its primary target is elastase, but it also has a moderate affinity for plasmin and thrombin.

Immunogen: A synthetic peptide of human alpha 1 Antitrypsin

Applications: WB,IP

Recommended Dilutions: WB: 1/500-1/1000 IP: 1/20

Host Species: Rabbit

Clonality: Rabbit Monoclonal

Clone ID: R01-1G6

MW: Calculated MW: 47 kDa; Observed MW: 55 kDa

Isotype: IgG

Purification: Affinity Purified

Species Reactivity: Human

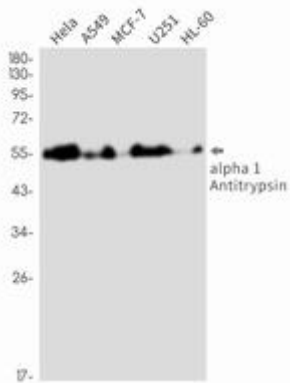
Conjugation: Unconjugated

Modification: Unmodified

Constituents: PBS (without Mg²⁺ and Ca²⁺), pH 7.3 containing 50% glycerol, 0.5% BSA and 0.02% sodium azide

Research Areas: Cell Biology

Storage & Shipping: Store at -20°C. Avoid repeated freezing and thawing



Western blot analysis of alpha 1 Antitrypsin in HeLa, A549, MCF-7, U251, HL-60 lysates using alpha 1-Antitrypsin antibody.