

ALPHA B CRYSTALLIN RABBIT MAB

Cat.#: N261827

Product Name: Anti-alpha B Crystallin Rabbit Monoclonal Antibody

Synonyms: CRYAB; CRYA2; Alpha-crystallin B chain; Alpha(B)-crystallin; Heat shock protein beta-5; HspB5; Renal carcinoma antigen NY-REN-27; Rosenthal fiber component

UNIPROT ID: P02511

Background: May contribute to the transparency and refractive index of the lens.

Immunogen: A synthetic peptide of human Alpha B Crystallin

Applications: WB, ICC/IF, IP

Recommended Dilutions: WB: 1/500-1/1000 IF: 1/50-1/200 IP: 1/20

Host Species: Rabbit

Clonality: Rabbit Monoclonal

Clone ID: R02-7A2

MW: Calculated MW: 20 kDa; Observed MW: 20 kDa

Isotype: IgG

Purification: Affinity Purified

Species Reactivity: Human, Rat

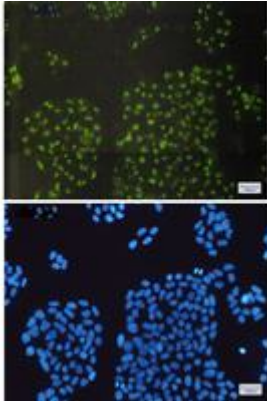
Conjugation: Unconjugated

Modification: Unmodified

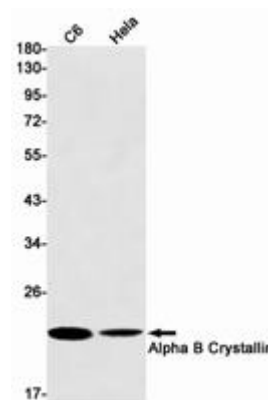
Constituents: PBS (without Mg²⁺ and Ca²⁺), pH 7.3 containing 50% glycerol, 0.5% BSA and 0.02% sodium azide

Research Areas: Signal Transduction

Storage & Shipping: Store at -20°C. Avoid repeated freezing and thawing



Immunocytochemistry analysis of Alpha B Crystallin (green) in Hela using Alpha B Crystallin antibody, and DAPI (blue)



Western blot analysis of Alpha B Crystallin in C6, Hela lysates using alpha B Crystallin antibody.