

ALPHA B CRYSTALLIN RABBIT PAB

Cat.#: N225830

Product Name: Anti-alpha B Crystallin Rabbit pAb

Synonyms: CRYAB; CRYA2; Alpha-crystallin B chain; Alpha(B)-crystallin; Heat shock protein beta-5; HspB5; Renal carcinoma antigen NY-REN-27; Rosenthal fiber component

UNIPROT ID: P02511

Background: May contribute to the transparency and refractive index of the lens.

Immunogen: A synthesized peptide derived from human CRYAB

Applications: WB,IHC-P,ICC/IF,IP

Recommended Dilutions: WB: 1/500-1/1000 IHC: 1/50-1/100 IF: 1/50-1/200 IP: 1/20

Host Species: Rabbit

Clonality: Rabbit Polyclonal

Clone ID: -

MW: Calculated MW: 20 kDa; Observed MW: 20 kDa

Isotype: IgG

Purification: Affinity Chromatography

Species Reactivity: Human,Rat

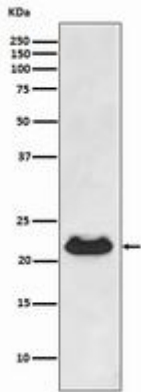
Conjugation: Unconjugated

Modification: Unmodified

Constituents: PBS (without Mg²⁺ and Ca²⁺), pH 7.3 containing 50% glycerol, 0.5% BSA and 0.02% sodium azide

Research Areas: Signal Transduction

Storage & Shipping: Store at -20°C. Avoid repeated freezing and thawing



Western blot analysis of CRYAB in Human fetal heart lysates using alpha B Crystallin antibody.