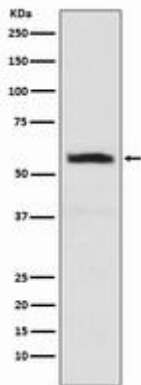


**ALPHA INTERNEXIN RABBIT PAB****Cat.#:** N225957**Product Name:** Anti-alpha Internexin Rabbit pAb**Synonyms:** INA; NEF5; Alpha-internexin; Alpha-Inx; 66 kDa neurofilament protein; NF-66; Neurofilament-66; Neurofilament 5**UNIPROT ID:** Q16352**Background:** Class-IV neuronal intermediate filament that is able to self-assemble. It is involved in the morphogenesis of neurons. It may form an independent structural network without the involvement of other neurofilaments or it may cooperate with NF-L to form the filamentous backbone to which NF-M and NF-H attach to form the cross-bridges.**Immunogen:** A synthesized peptide derived from human alpha Internexin**Applications:** WB,IHC-P,ICC/IF,IP,FC**Recommended Dilutions:** WB: 1/500-1/1000 IHC: 1/50-1/100 IF: 1/50-1/200 IP: 1/20 FC: 1/50-1/100**Host Species:** Rabbit**Clonality:** Rabbit Polyclonal**Clone ID:** -**MW:** Calculated MW: 55 kDa; Observed MW: 60 kDa**Isotype:** IgG**Purification:** Affinity Chromatography**Species Reactivity:** Human,Mouse,Rat**Conjugation:** Unconjugated**Modification:** Unmodified**Constituents:** PBS (without Mg<sup>2+</sup> and Ca<sup>2+</sup>), pH 7.3 containing 50% glycerol, 0.5% BSA and 0.02% sodium azide**Research Areas:** Cell Biology**Storage & Shipping:** Store at -20°C. Avoid repeated freezing and thawing



Western blot analysis of alpha Internexin in SH-SY5Y lysates using alpha Internexin antibody.