

ALPHA SKELETAL MUSCLE ACTIN RABBIT MAB

Cat.#: N261792

Product Name: Anti-alpha Skeletal Muscle Actin Rabbit Monoclonal Antibody

Synonyms: ACTA1; ACTA; Actin; alpha skeletal muscle; Alpha-actin-1

UNIPROT ID: P68133

Background: Actins are highly conserved proteins that are involved in various types of cell motility and are ubiquitously expressed in all eukaryotic cells.

Immunogen: A synthetic peptide of human Actin

Applications: WB,IP

Recommended Dilutions: WB: 1/500-1/1000 IP: 1/20

Host Species: Rabbit

Clonality: Rabbit Monoclonal

Clone ID: R03-5D1

MW: Calculated MW: 42 kDa; Observed MW: 42 kDa

Isotype: IgG

Purification: Affinity Purified

Species Reactivity: Human,Mouse,Rat

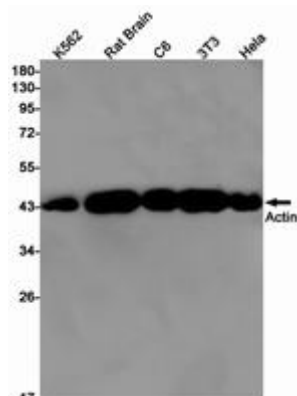
Conjugation: Unconjugated

Modification: Unmodified

Constituents: PBS (without Mg²⁺ and Ca²⁺), pH 7.3 containing 50% glycerol, 0.5% BSA and 0.02% sodium azide

Research Areas: Signal Transduction

Storage & Shipping: Store at -20°C. Avoid repeated freezing and thawing



Western blot analysis of Actin in K562, rat Brain, C6, 3T3, HeLa lysates using alpha Skeletal Muscle Actin antibody.



Product Description

Pioneering GTPase and Oncogene Product Development since 2010
